

brush-holders for commutator machines

- 1** *radial brush-holders*
- 32** *trailing brush-holders*
- 35** *clamps and intermediate pieces*

brush-holders for slip ring machines

- 37** *radial brush-holders*
- 40** *double clamping brush-holders*
- 41** *leg brush-holders*

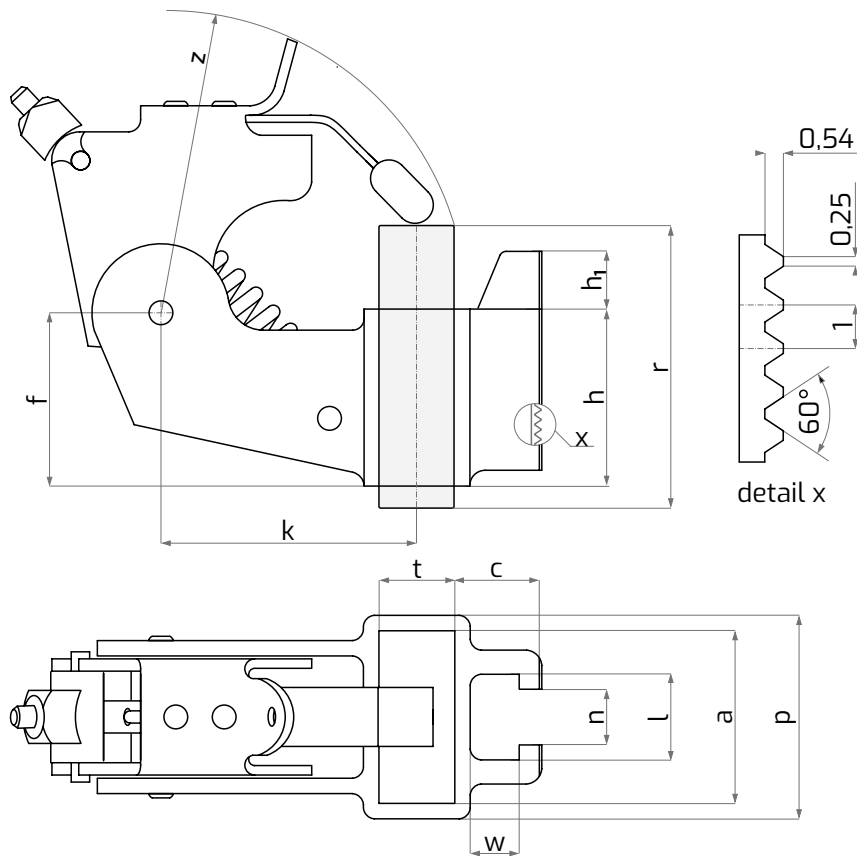
radial brush-holders for commutator machines



material : brass

dimensions (mm) :

TYPE	t	a	r	h	h ₁	c	l	n	k	f	z approx.	p approx.	w
505700	8	16	32	20	-	10	10.2	6.3	29	20	37	20	5
506100	8	20	32	20	-	10	10.2	6.3	29	20	37	24	5
506600	8	25	32	20	-	10	10.2	6.3	29	20	37	29	5
506200	10	20	32	20	-	10	10.2	6.3	30	20	37	24	5
506700	10	25	40	25	-	10	10.2	6.3	35	25	41.5	29	5
506800	12.5	25	40	25	-	10	10.2	6.3	36	25	44	30	5
507400	12,5	32	40	25	7	10	10.2	6.3	36	25	44	37	5
507500	16	32	40	25	7	12.5	13.5	8.5	38	25	44	37	5
507000	20	25	40	25	-	12.5	13.5	8.5	40	25	44	30	5
507600	20	32	40	25	7	12.5	13.5	8.5	40	25	44	37	5
507700	25	32	40	25	7	12.5	13.5	8.5	44	25	46.5	37	5



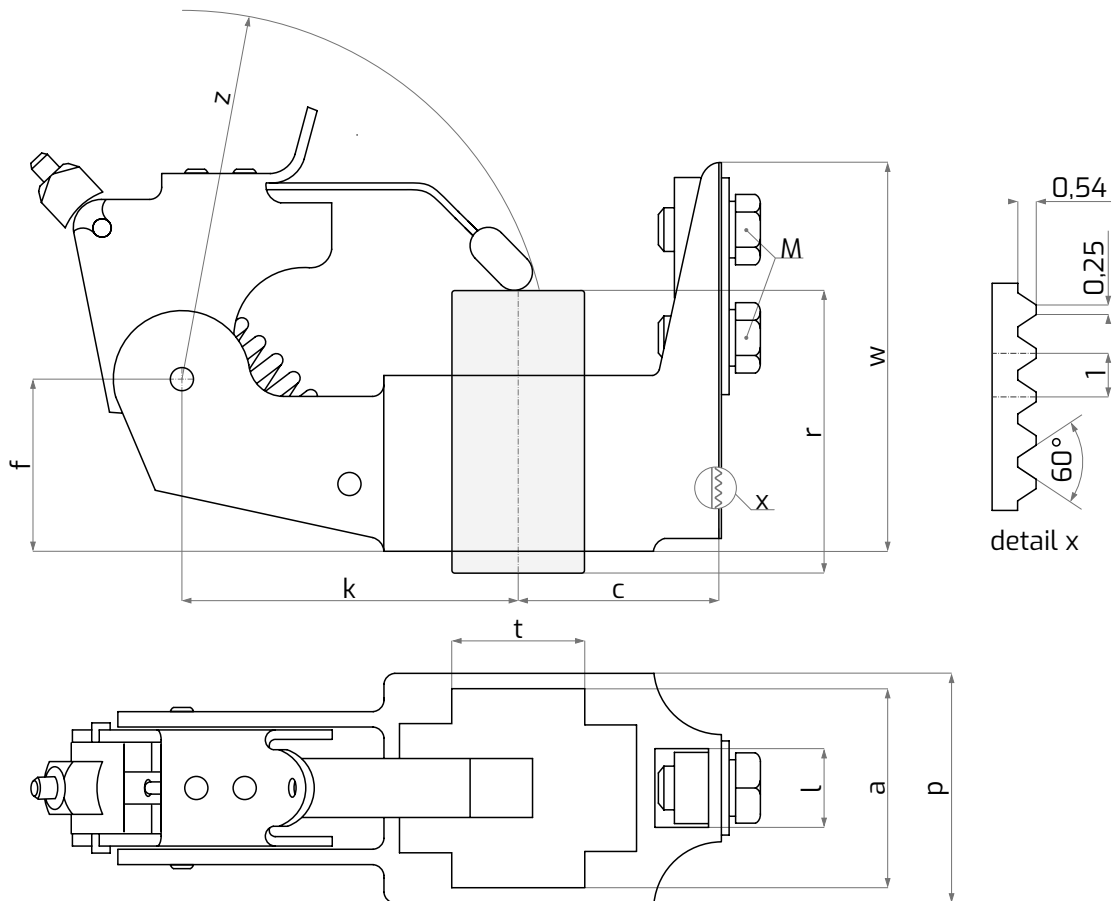
radial **brush-holders for commutator machines**



material : brass

dimensions (mm) :

TYPE	t	a	r	c	l	M	k	f	z approx.	p approx.	w approx.
503300/M	16	32	40	30	16	M6	47.5	25	47.5	36	55
503500/M	20	32	40	30	16	M6	47.5	25	47.5	36	55
503700/M	25	32	40	30	16	M6	47.5	25	47.5	36	55
503900/M	32	32	40	30	16	M6	47.5	25	47.5	36	55



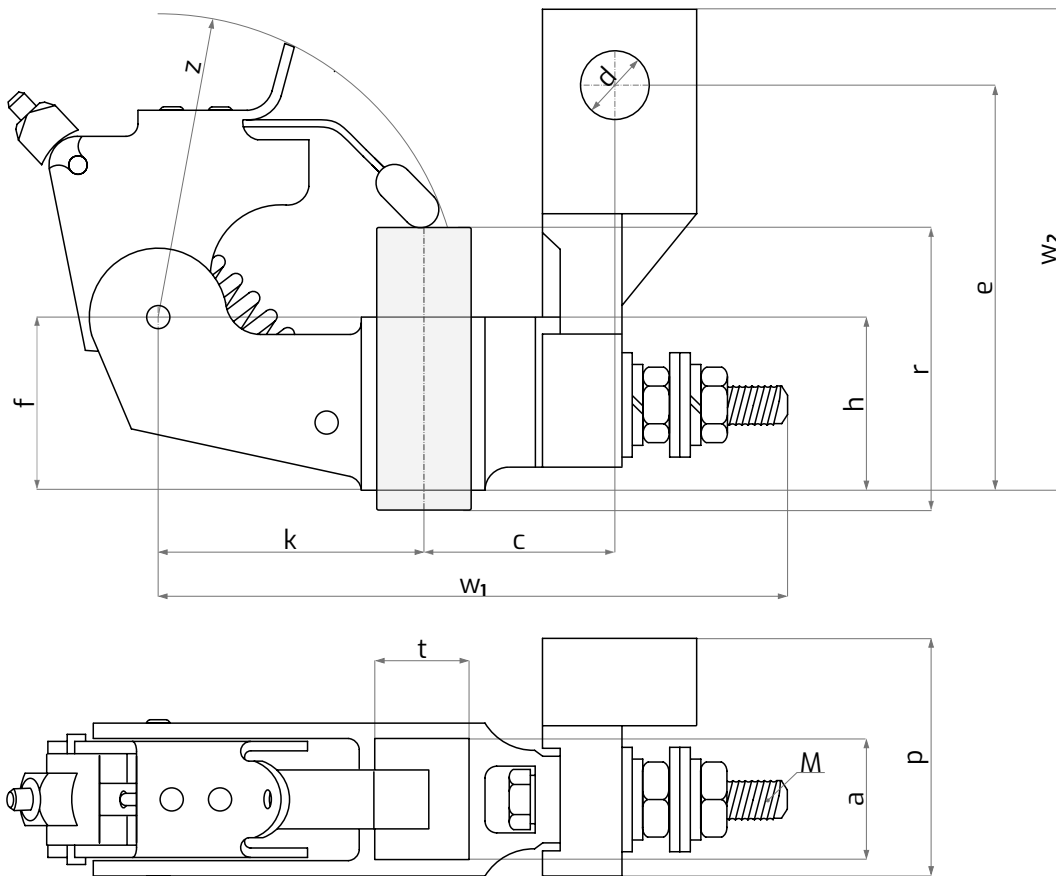
radial **brush-holder for commutator machines**



material : brass, polymer

dimensions (mm) :

TYPE	t	a	r	h	c	e	d	M	k	f	z approx.	p approx.	w ₁ approx.	w ₂ approx.
505500	10	12,5	25	20	22,5	477	7	M5	30	20	37	27.5	72	57



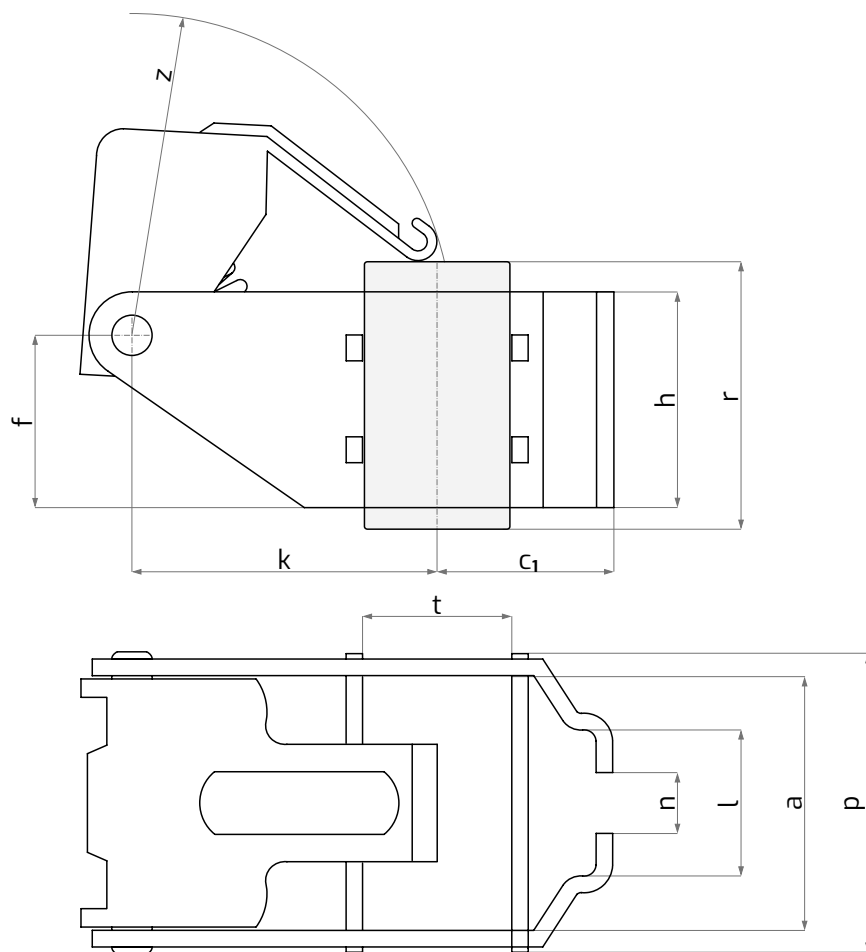
radial **brush-holder for commutator machines**



material : brass

dimensions (mm) :

TYPE	t	a	r	h	c ₁	n	l	k	f	z approx.	p approx.
531800	10	20	25	20	16	7	17	25	15	28	25



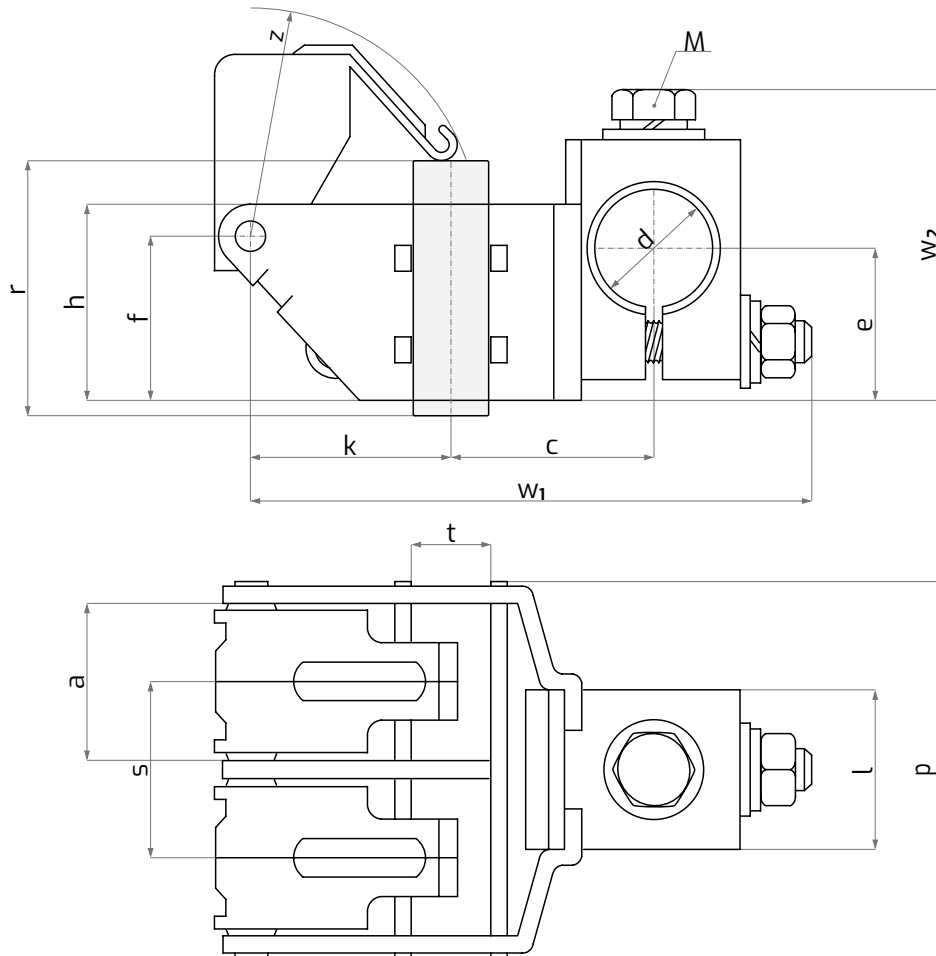
radial **brush-holders for commutator machines**



material : brass

dimensions (mm) :

TYPE	t	a	r	h	c	s	e	d	l	M	k	f	z approx.	p approx.	W ₁ approx.	W ₂ approx.
535100/M	10	20	32	25	25.5	21.5	19	15	20	M6	25	21	28	48	71	40
535200/M	10	20	32	25	30.5	21.5	19	15	20	M6	34	21	38	48	85	40



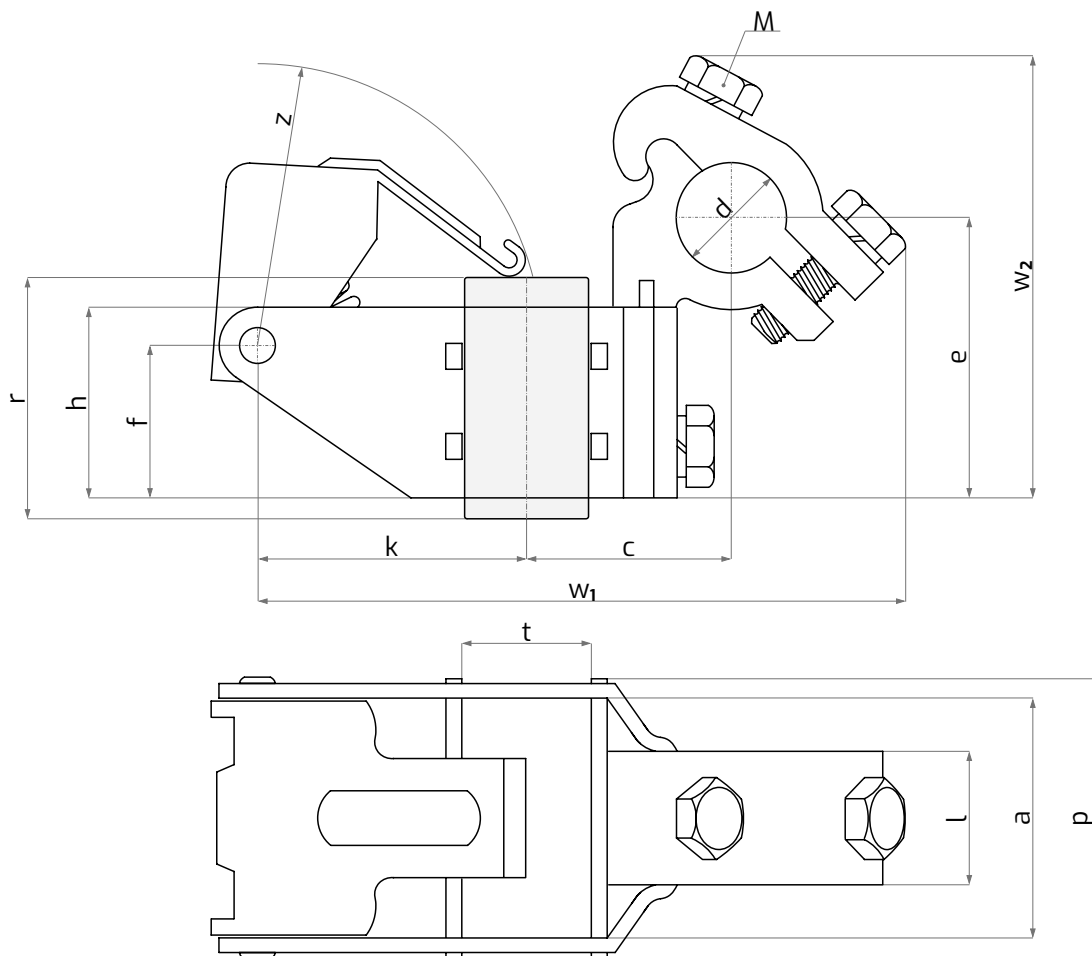
radial **brush-holders for commutator machines**



material : brass

dimensions (mm) :

TYPE	t	a	r	h	c	e	d	l	M	k	f	z approx.	p approx.	w ₁ approx.	w ₂ approx.
530100	6.5	20	25	20	25	24	15	17	M6	25	16	28	25	74	44
530200	10	12.5	25	20	25	24	15	12.5	M6	24.5	16	28	19.5	74	44
530300	10	20	25	20	25	24	15	17	M6	25	16	28	25	74	44
530700	10	32	25	20	25	26	15	17	M6	25	16	28	37	74	46
530900/M	16	25	32	25	36	29	20	17	M6	37	20	42	30	99	54
531300	20	25	32	25	30	30	15	17	M6	37	20	42	30	90	50
531500/M	25	25	32	25	36	29	20	17	M6	37	20	42	30	99	54



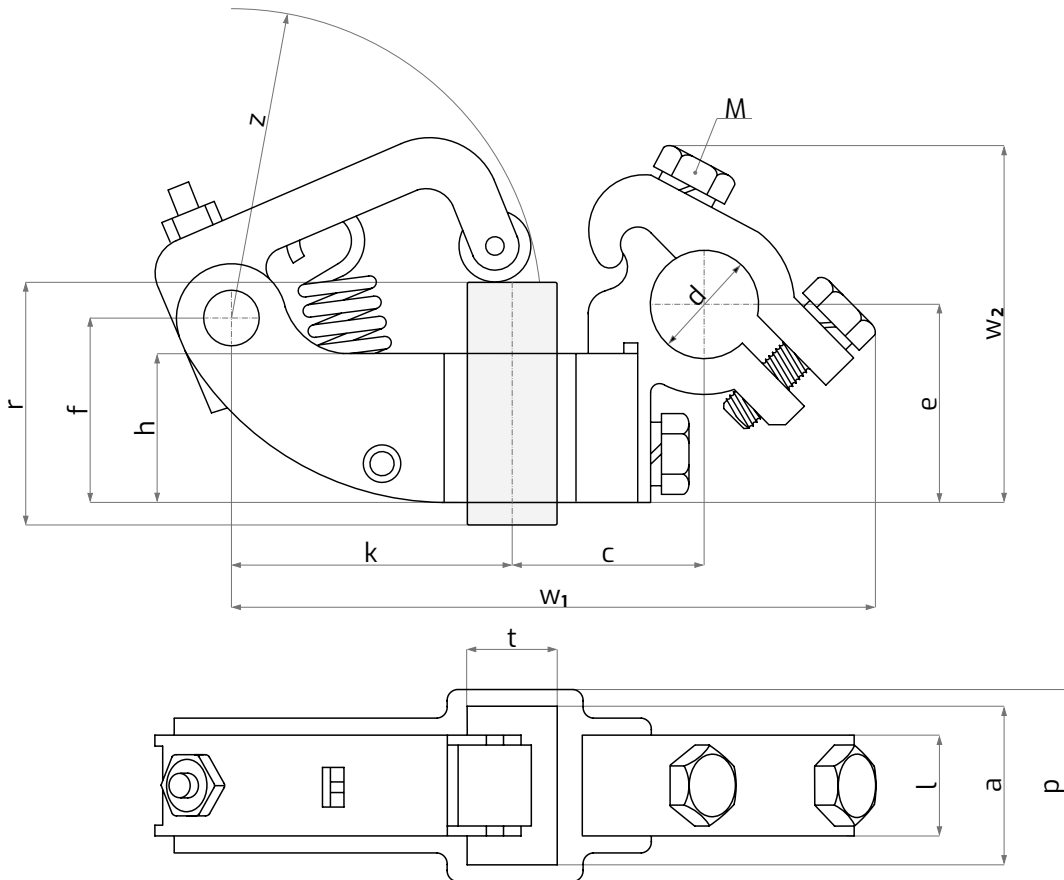
radial **brush-holder for commutator machines**



material : brass

dimensions (mm) :

TYPE	t	a	r	h	c	e	d	l	M	k	f	z approx.	p approx.	w ₁ approx.	w ₂ approx.
502900	12.5	20	32	18	25.5	24	15	12.5	M6	35.5	22.5	40.5	24	84	45



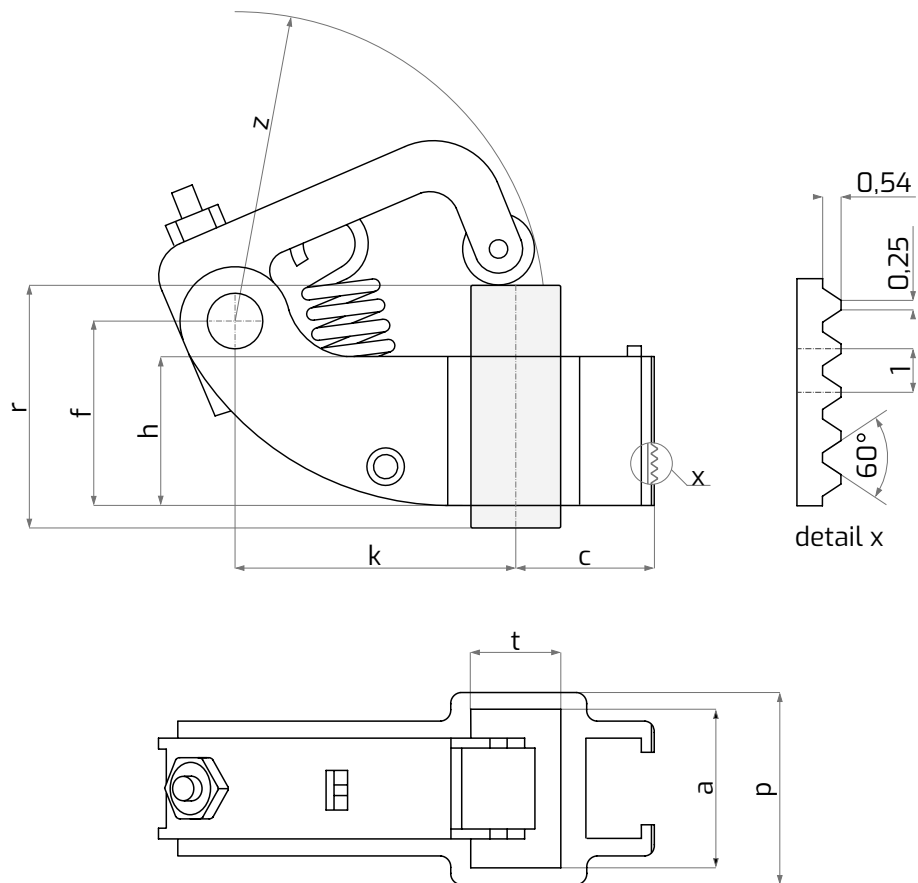
radial **brush-holder for commutator machines**



material : brass

dimensions (mm) :

TYPE	t	a	r	h	c	k	f	z approx.	p approx.
506300	12.5	20	32	18	10	35.5	22.5	40.5	24



radial **brush-holders for commutator machines**

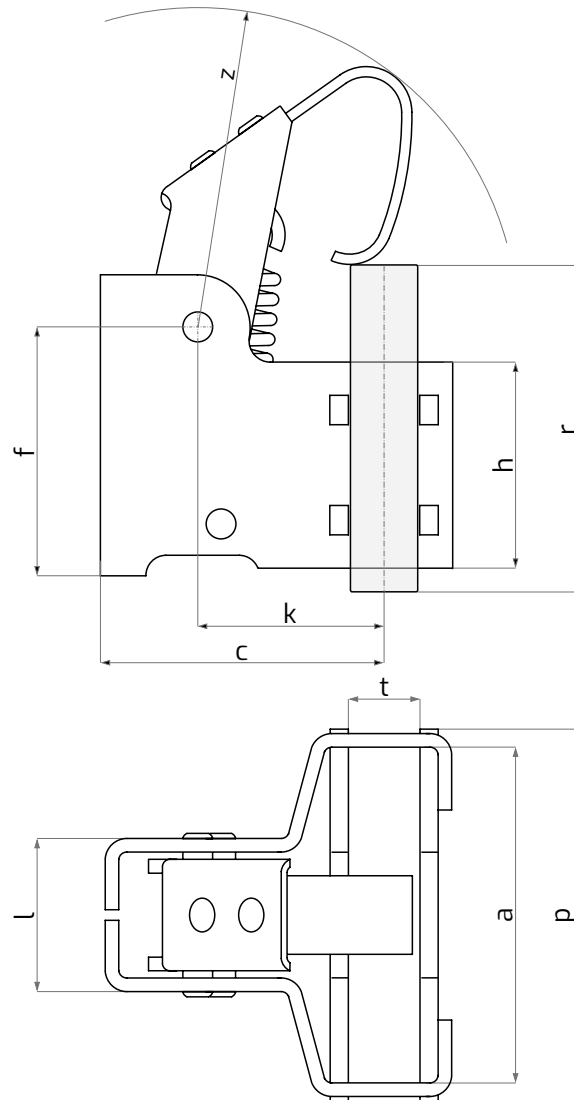


material : brass

dimensions (mm) :

TYPE	t	a	r	h	c ₁	l	k	f	z approx.	p approx.
533100*	6.5	32	32	20	27	12	17.3	24	30	37
533200*	10	32	32	20	27	12	17.3	24	30	37
533300	12.5	32	32	25	27	12	17.3	29	30	37

* specific arrangements required



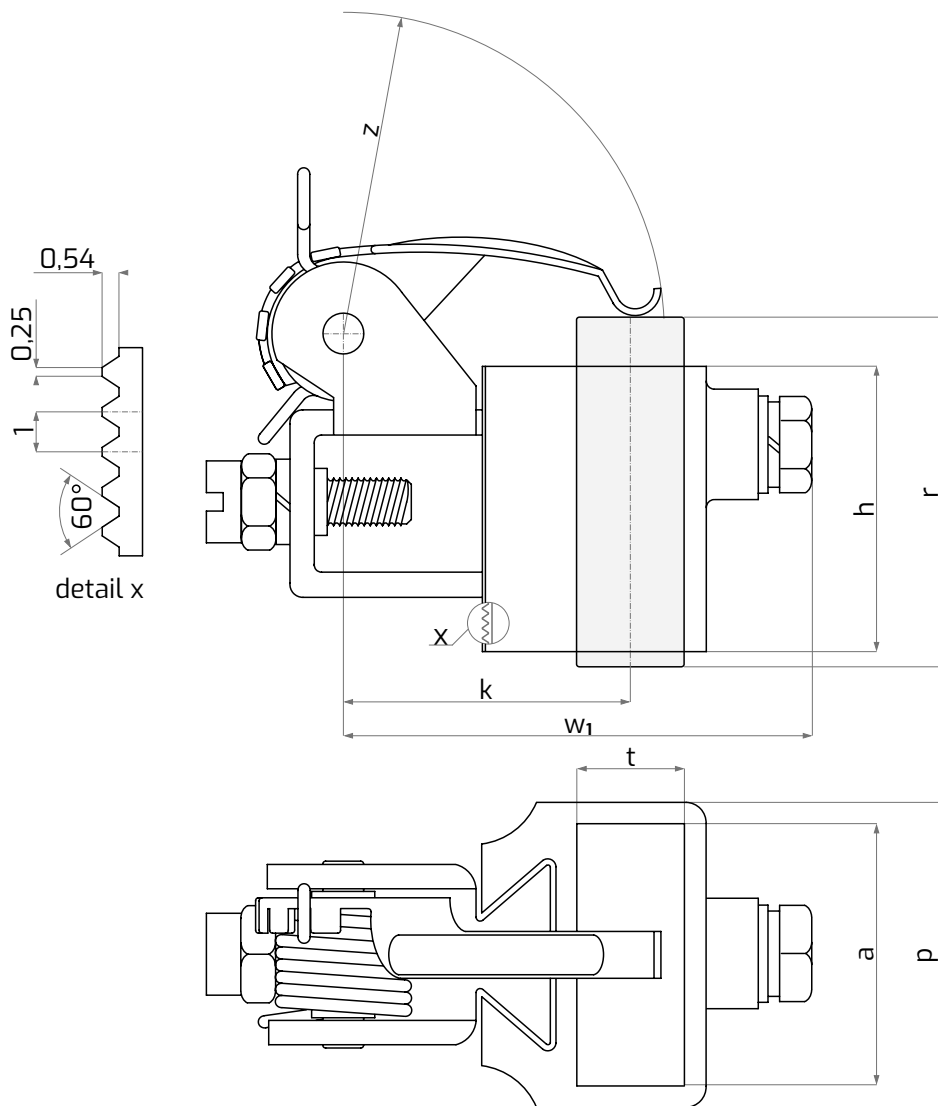
radial **brush-holder for commutator machines**



material : brass

dimensions (mm) :

TYPE	t	a	r	h	k	z approx.	p approx.	w ₁ approx.
500400	12.5	32	45	35	36.5	40	36.4	59



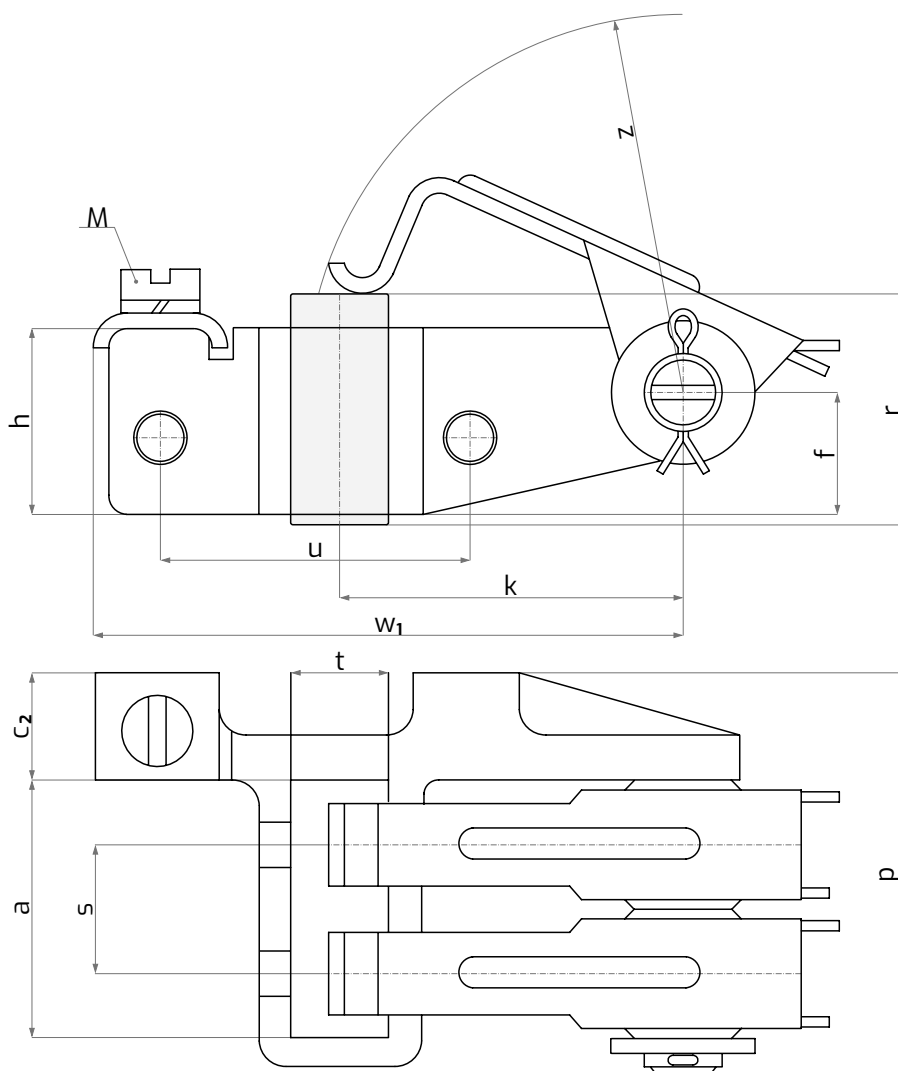
radial **brush-holder for commutator machines**



material : brass

dimensions (mm) :

TYPE	t	a	r	h	c ₂	s	M	u	k	f	z approx.	p approx.	W ₁ approx.
505000	8	20	25	15	8	10	M4	24	26.5	10	30	34.5	45.5



radial **brush-holder for commutator machines**

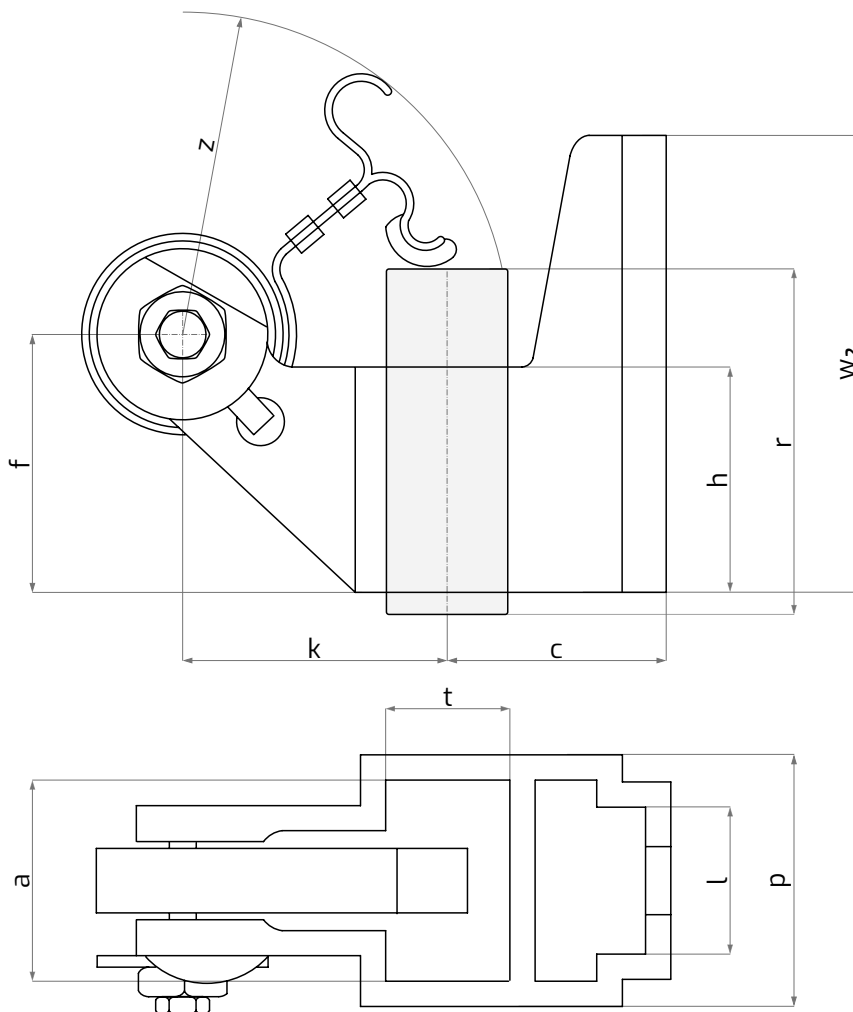


material : brass

dimensions (mm) :

TYPE	t	a	r	h	c ₁	l	k	f	z approx.	p approx.	w ₂ approx.
501800	12	20	32	22	22	13	25	26	32	24.4	45

specific arrangements required



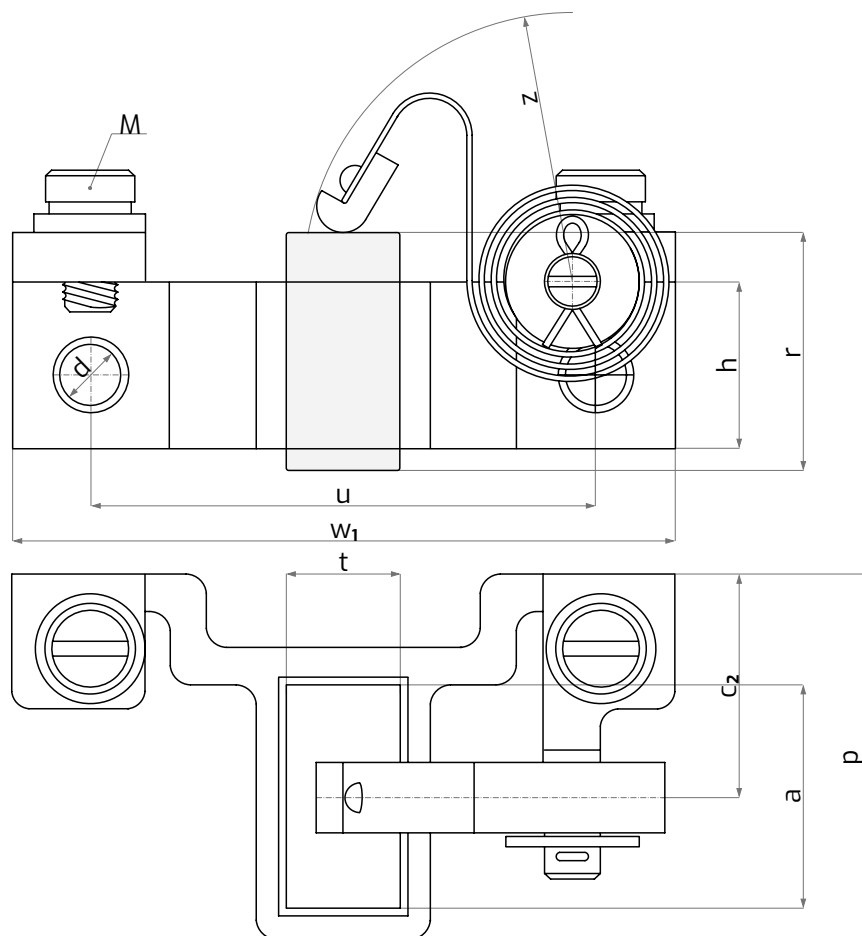
radial **brush-holder for commutator machines**



material : brass

dimensions (mm) :

TYPE	t	a	r	h	c ₂	d	M	u	z approx.	p approx.	w ₂ approx.
500100	12.5	25	25	18	24.5	8.5	M6	56	29	40	73



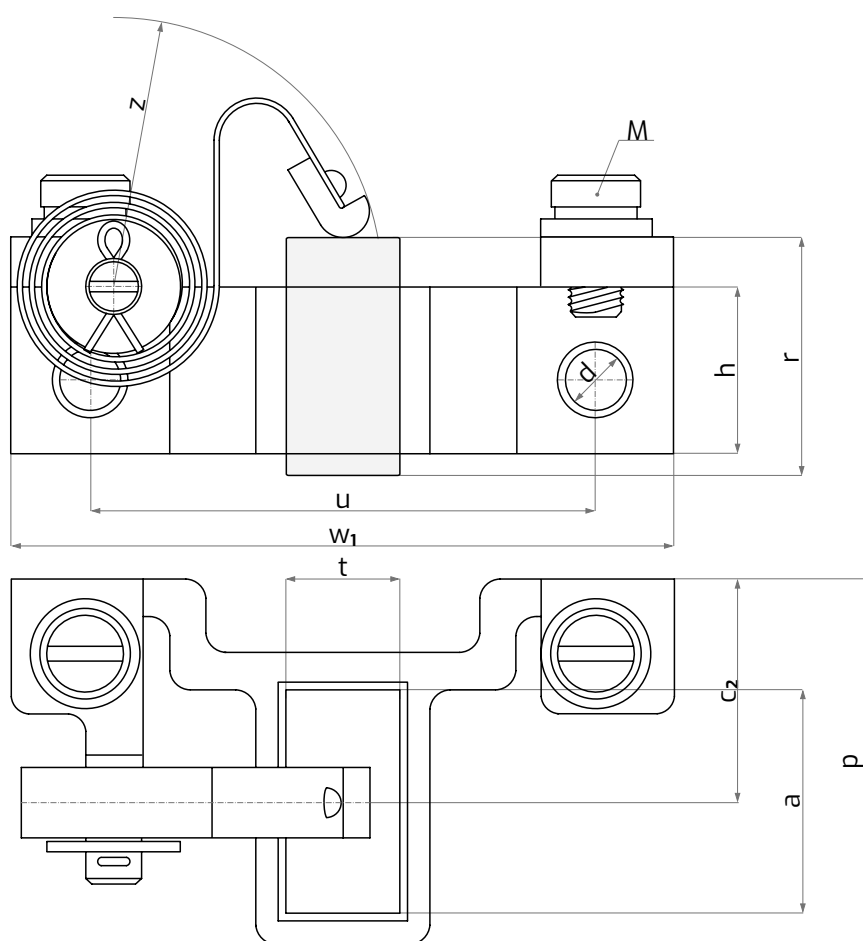
radial **brush-holder for commutator machines**



material : brass

dimensions (mm) :

TYPE	t	a	r	h	c ₂	d	M	u	z approx.	p approx.	w ₂ approx.
500200	12.5	25	25	18	24.5	8.5	M6	56	29	40	73



radial **brush-holder for commutator machines**

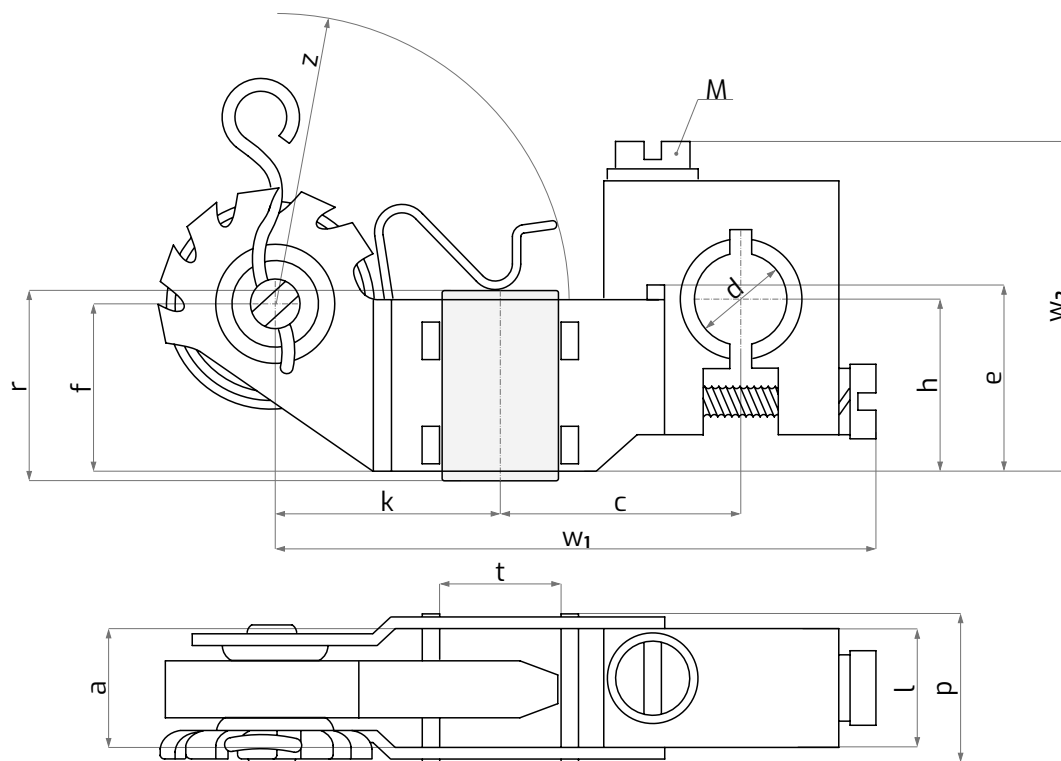
material : brass

dimensions (mm) :



TYPE	t	a	r	h	c	e	d	l	M	k	f	z approx.	p approx.	W ₁ approx.	W ₂ approx.
535300	10	10	20	14	20.5	15	8	10	M4	19	14	25	15	53.5	26

specific arrangements required



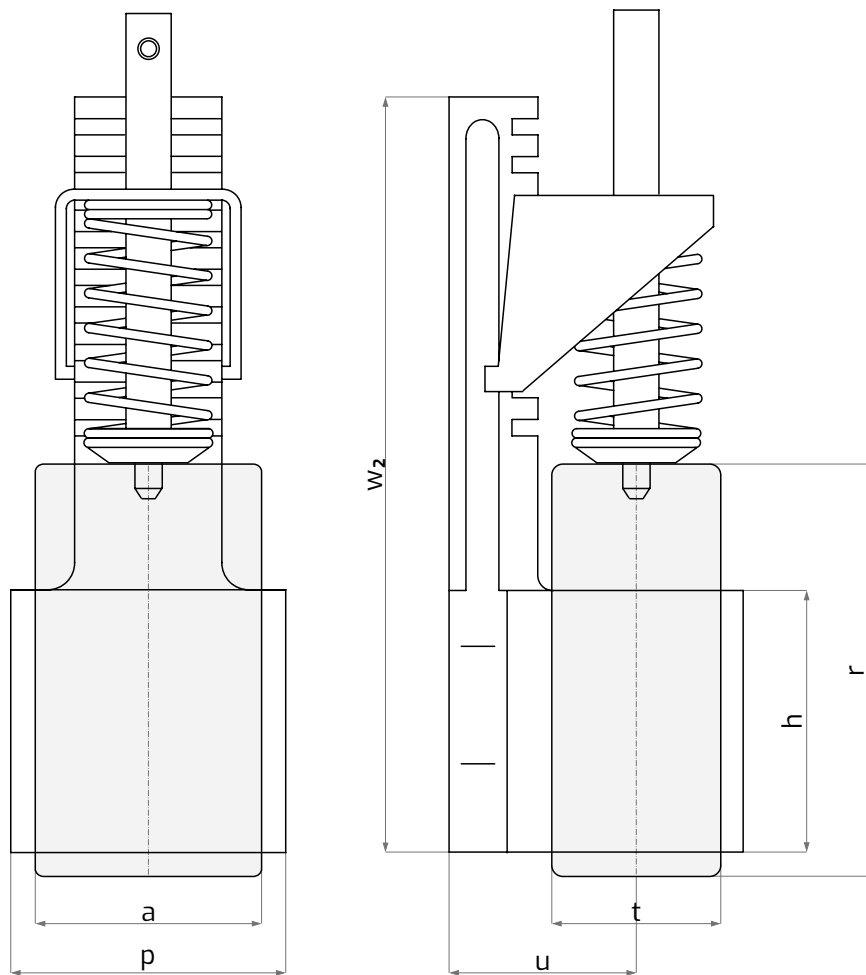
radial **brush-holders for commutator machines**



material : brass

dimensions (mm) :

TYPE	t	a	r	h	u	p approx.	w ₂ approx.
503200	22	30	60	35	25	36	100
501200	32	32	60	35	30	38	100



radial **brush-holders for commutator machines**

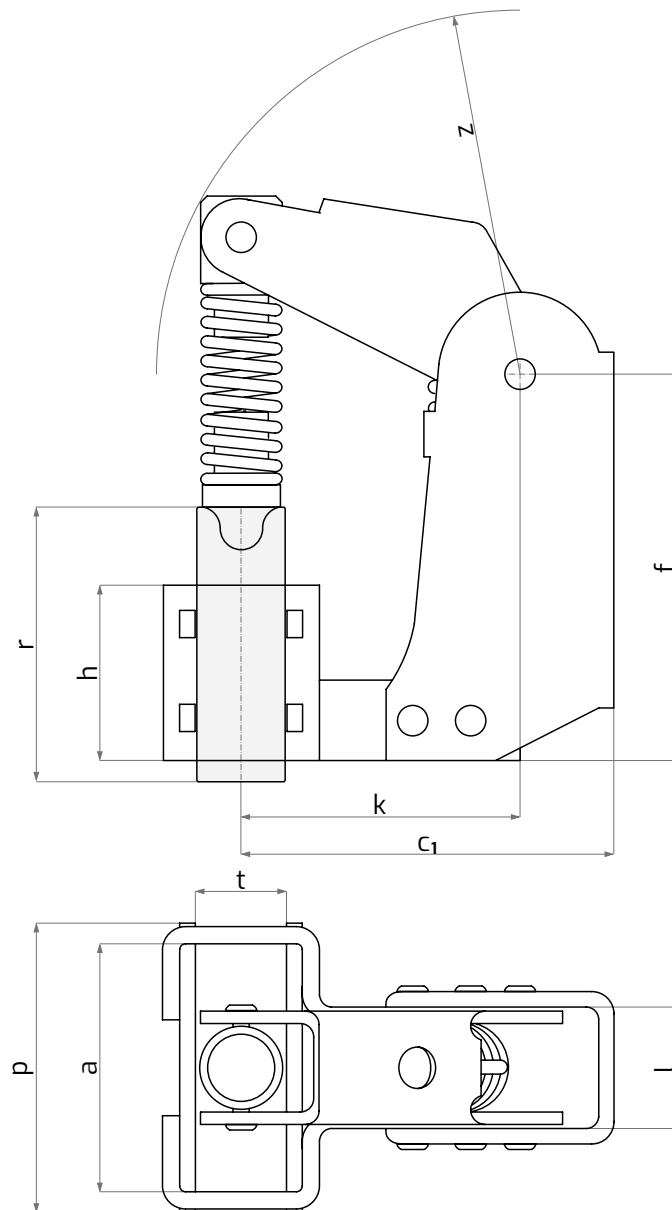


material : brass

dimensions (mm) :

TYPE	t	a	r	h	c ₁	l	k	f	z approx.	p approx.
534400*	10	32	32	22	47.2	16	34.7	49	43	38
533900	12.5	32	32	22	45	16	32.5	49	42	38
534000	16	32	32	22	46.7	16	34.2	49	43	38
534100	20	32	32	22	47.2	16	34.7	49	44	38
534200	25	32	32	22	47.2	16	34.7	49	44	38
534300	32	32	32	22	50	16	37.5	49	46	38

* specific arrangements required



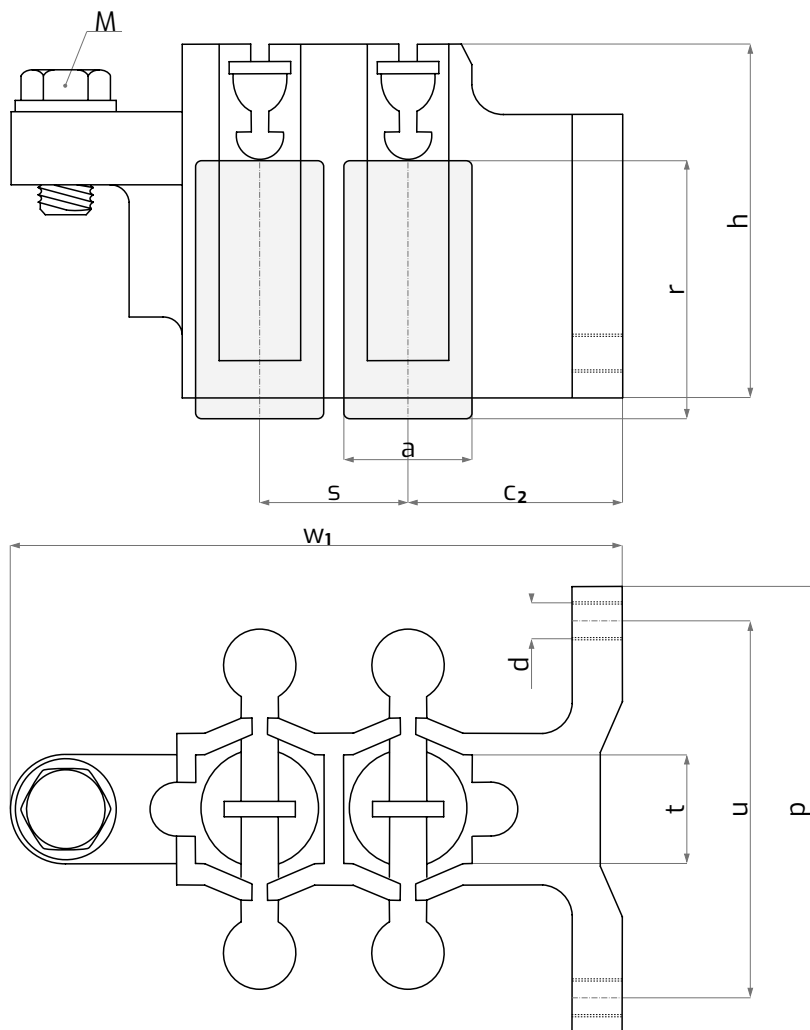
radial **brush-holder for commutator machines**



material : Brass

dimensions (mm) :

TYPE	t	a	r	h	c ₂	s	d	M	u	p approx.	W ₁ approx.
502700	10	12.5	20	36	20.5	14.5	6	M5	32	44	60



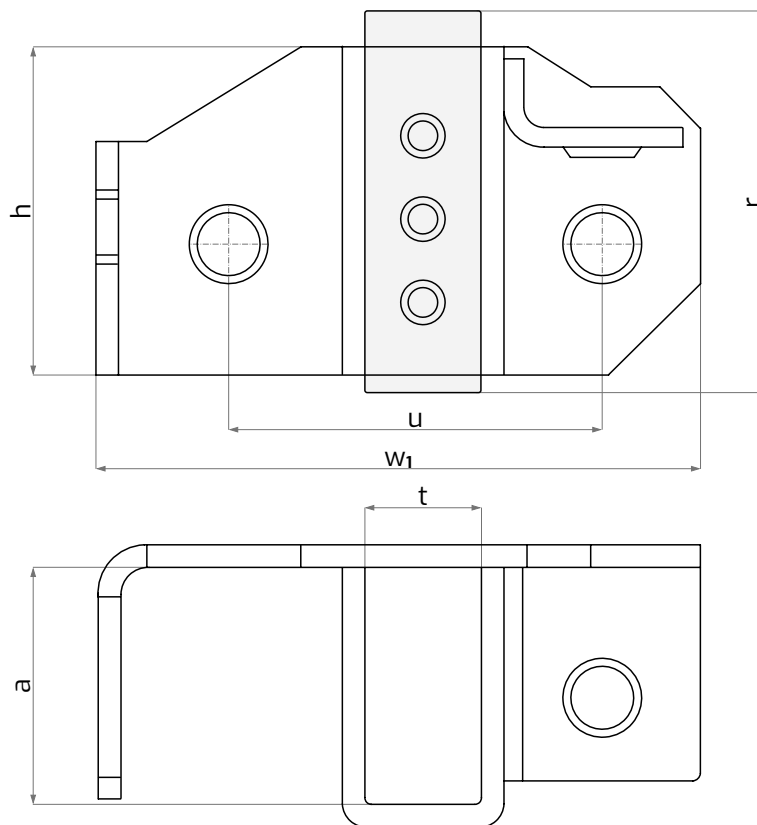
radial **brush-holder for commutator machines**



material : steel

dimensions (mm) :

TYPE	t	a	r	h	u	w ₁
527900	6.4	12.5	18.2	18	20	33.5



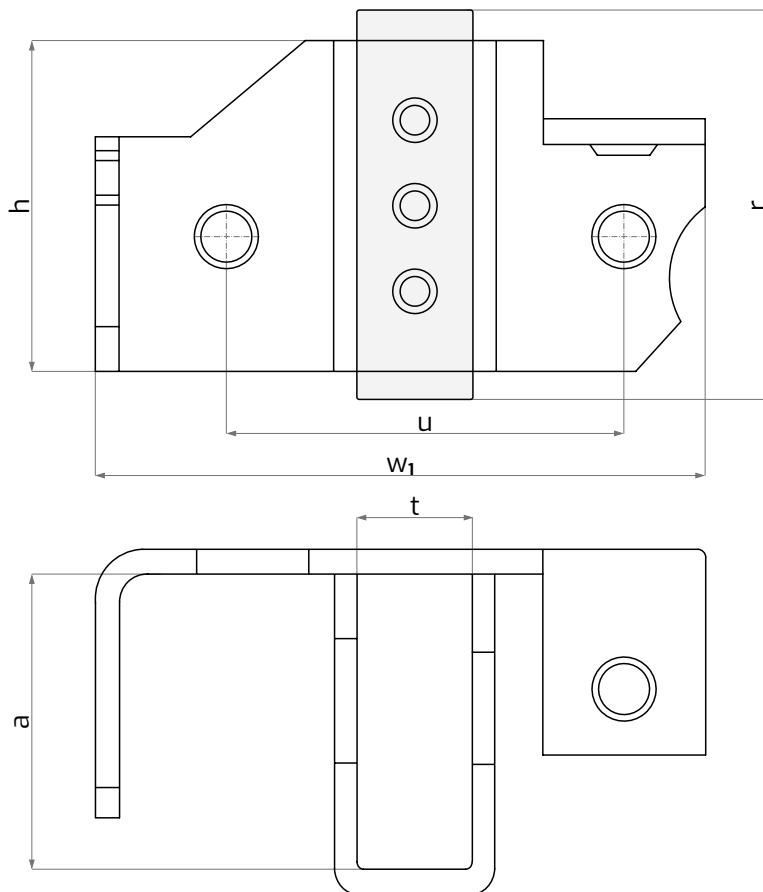
radial **brush-holders for commutator machines**



material : steel

dimensions (mm) :

TYPE	t	a	r	h	u	w ₁
527800	6.3	10	21	20	20	33.5
528000	6.4	12.5	18.2	18	20	33.5



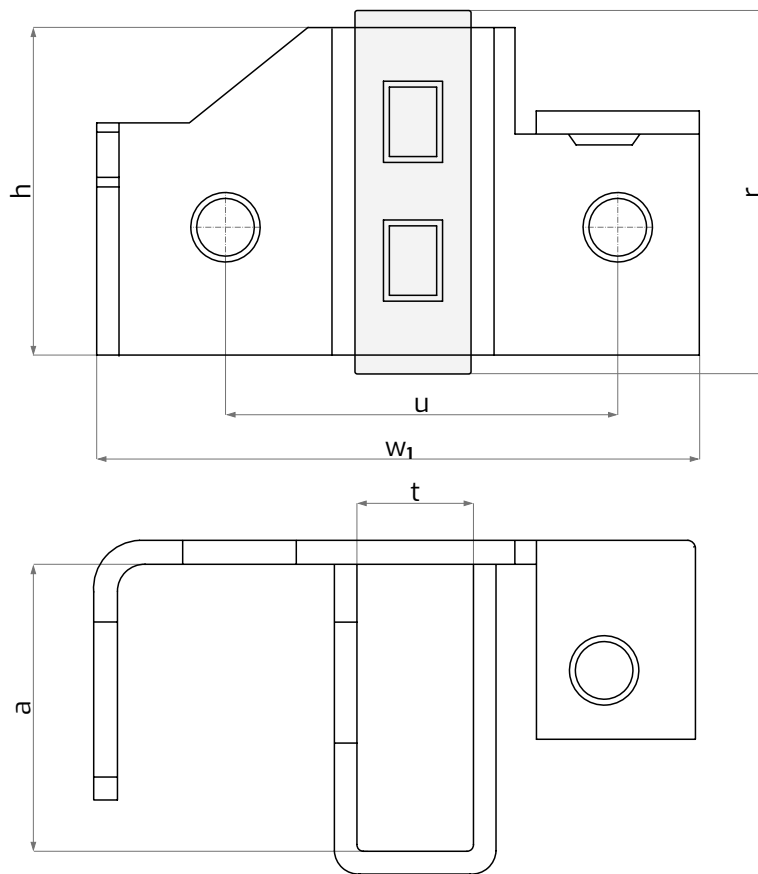
radial **brush-holder for commutator machines**



material : steel

dimensions (mm) :

TYPE	t	a	r	h	u	w ₁
528100	6.3	16	21.5	18.7	22	33.5



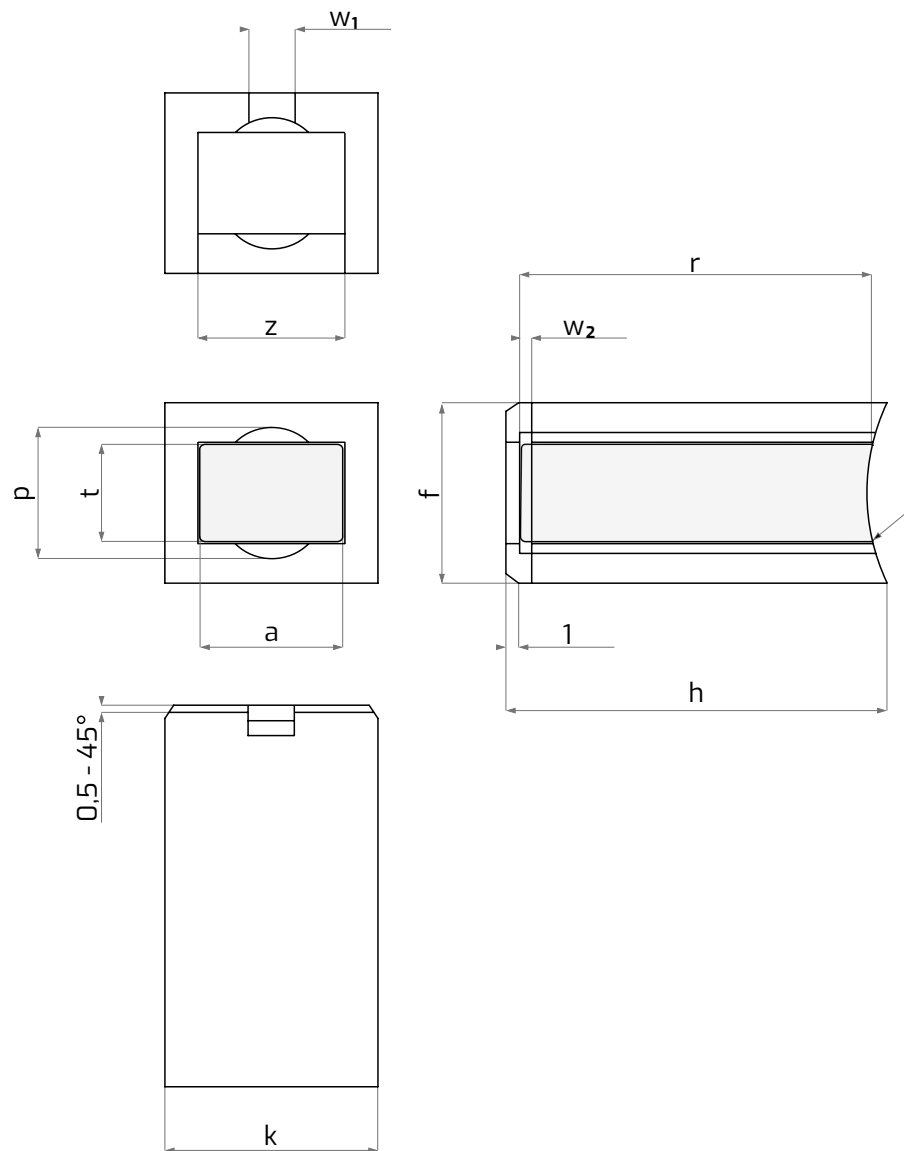
radial **brush-holder for commutator machines**



material : thermosetting polymer

dimensions (mm) :

TYPE	t	a	r	h	k	f	z approx.	p approx.	W ₁ approx.	W ₂ approx.
550500	6	9	14	22	12.5	11	9	Ø7.2	2.9	0.9



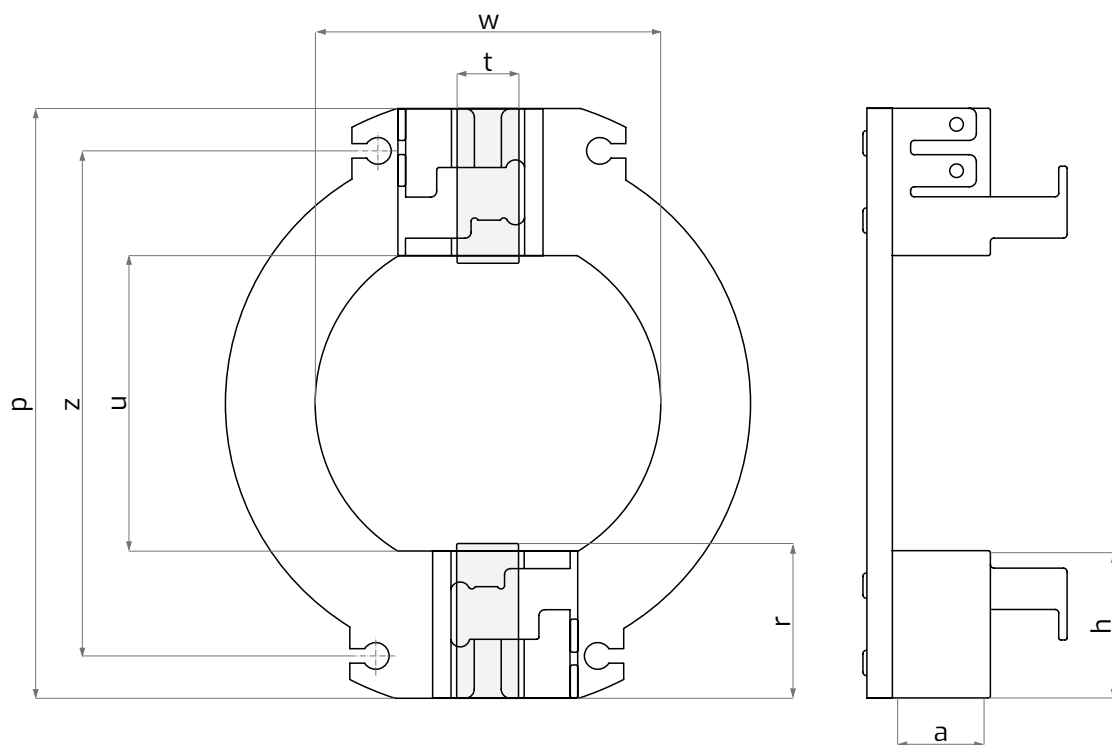
radial **brush-holder for commutator machines**

material : brass

dimensions (mm) :



TYPE	t	a	r	h	c	u	z	p	w
582100	5.4	8.5	25	15	20.5	28	44	56	32



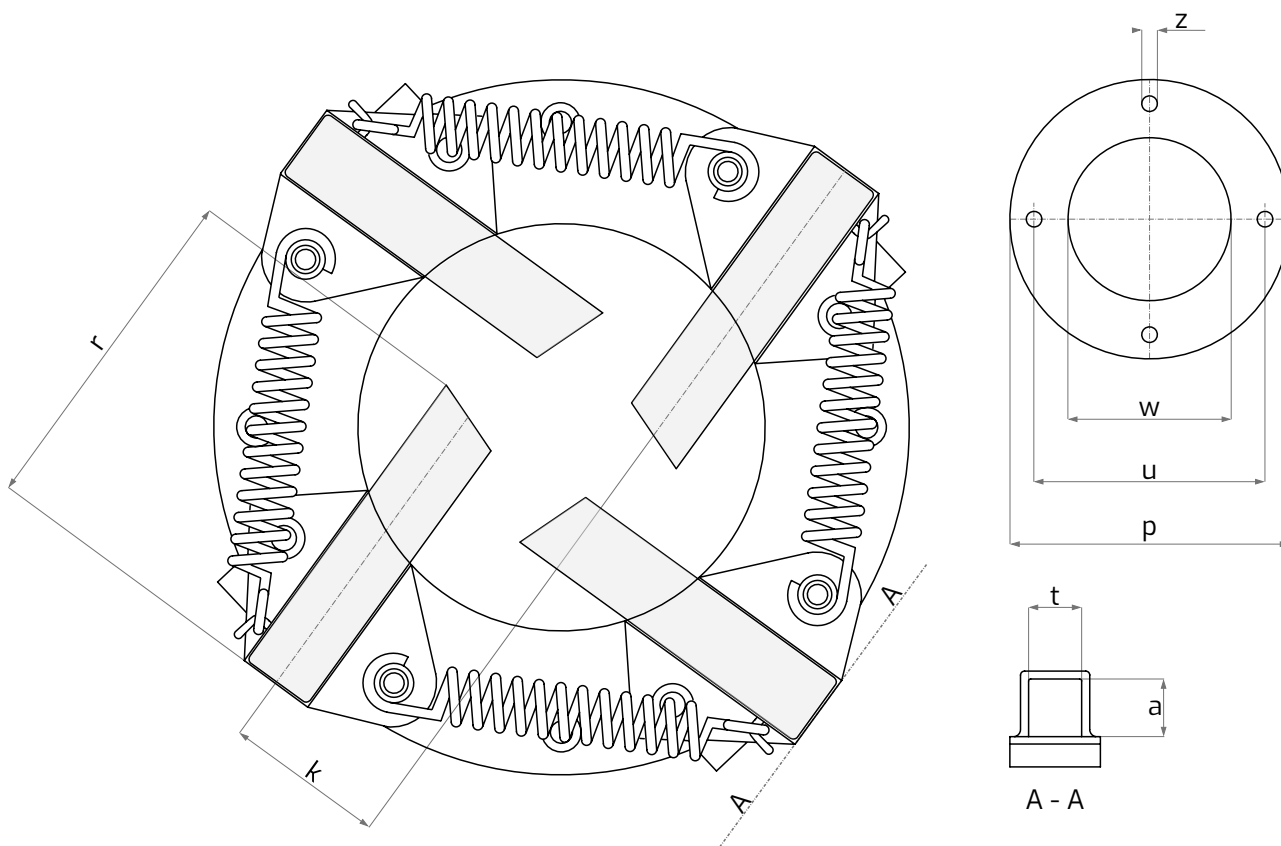
radial **brush-holder for commutator machines**



material : brass

dimensions (mm) :

TYPE	t	a	r	k	u	z	p	w
580100	12.7	16.4	43	27.5	114	4.5	127	75



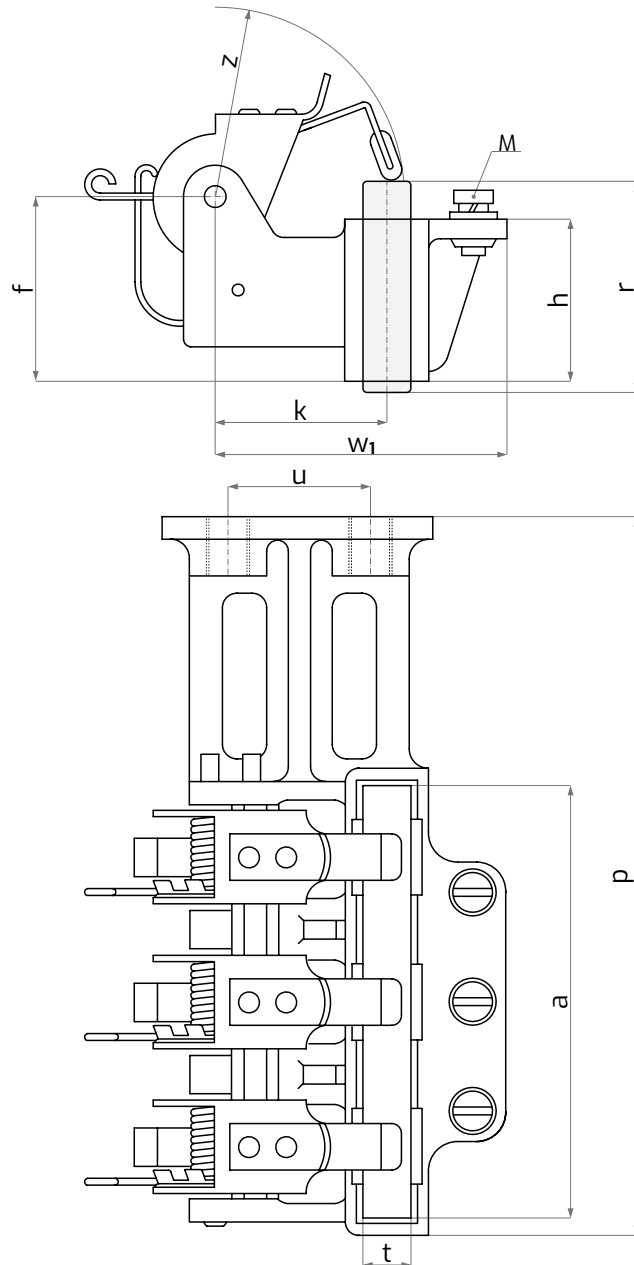
radial **brush-holder for commutator machines**



material : brass

dimensions (mm) :

TYPE	t	a	r	h	M	u	k	f	z approx.	p approx.	w ₁ approx.
500300/M	12.5	96	50	40	M5	35	40	45	42.5	159.5	67.5



radial **brush-holders for commutator machines**

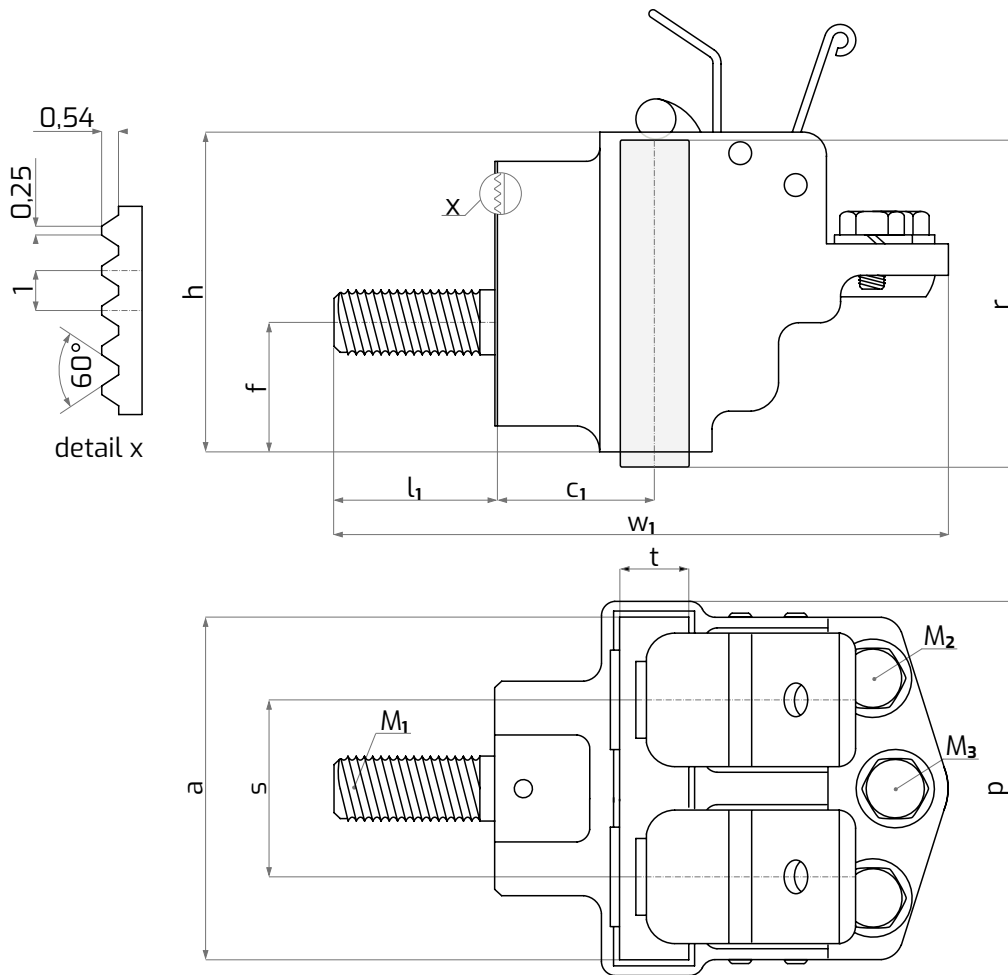


material : brass

dimensions (mm) :

TYPE	t	a	r	h	c ₁	s	l ₁	M ₁	M ₂	M ₃	f	p approx.	w ₁ approx.
500500*	12.5	64	60	60	30	32	32	M12	M6	M6	25	70	114
502000	20	80	60	60	30	40	32	M12	M6	M6	35	86	116

* specific arrangements required



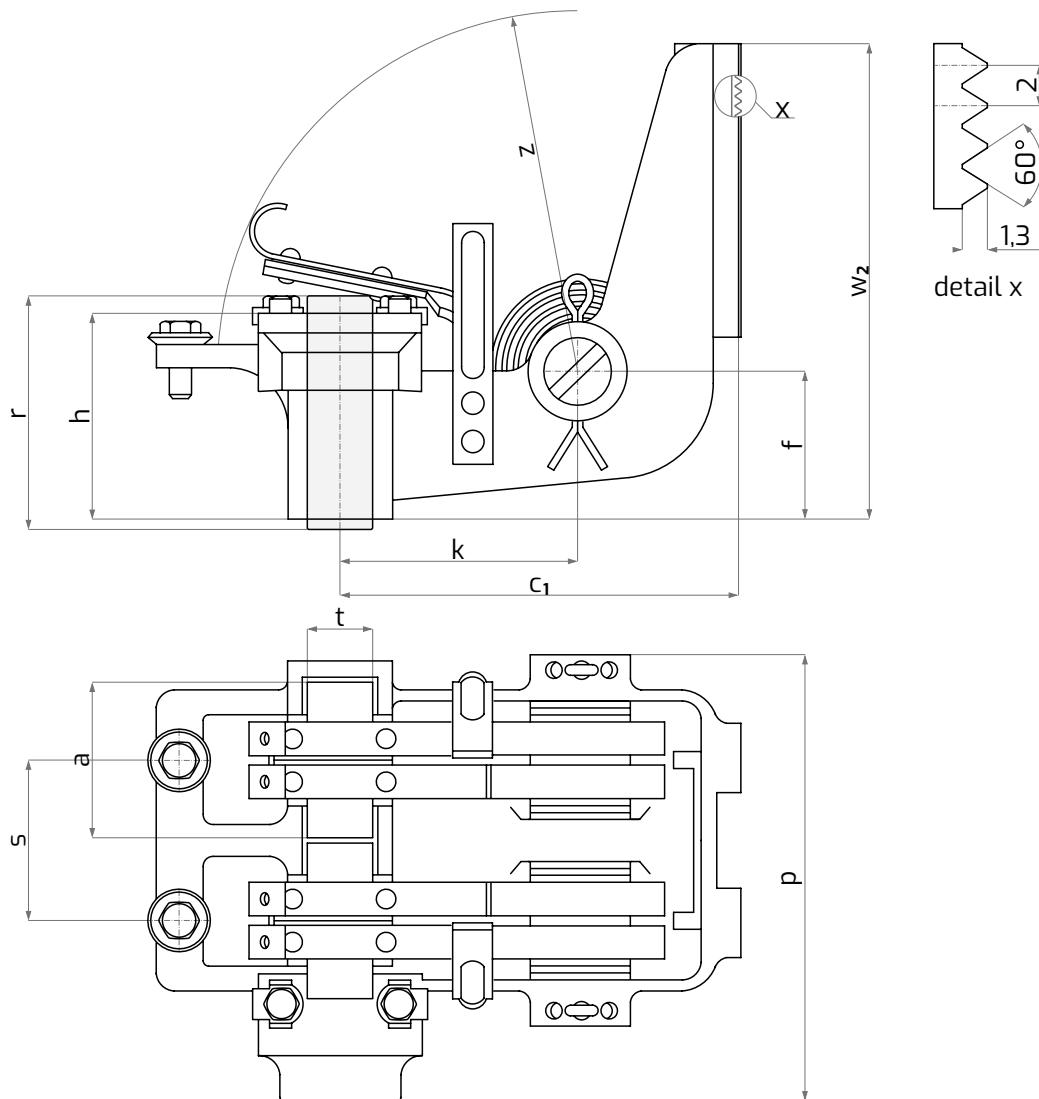
radial **brush-holder for commutator machines**



material : brass

dimensions (mm) :

TYPE	t	a	r	h	c ₁	s	k	f	z approx.	p approx.	w ₂ approx.
501600/I	17	40	60	48	102	42	60	38	94	113	122



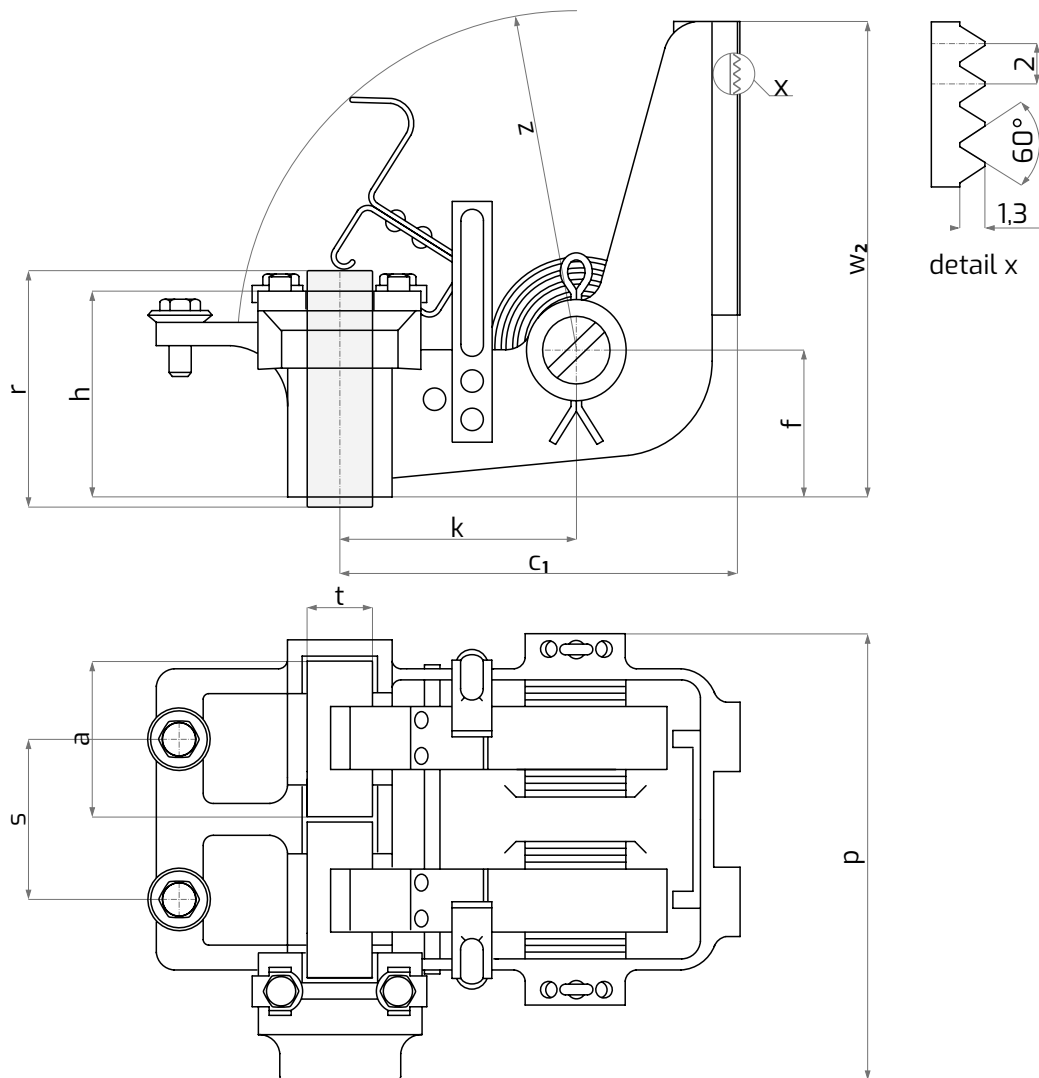
radial **brush-holders for commutator machines**

material : brass

dimensions (mm) :



TYP	t	a	r	h	c ₁	s	k	f	z approx.	p approx.	w ₂ approx.
501600/II	17	40	55	48	102	42	60	38	79	113	122
501600/III	20	40	55	48	102	42	60	38	79	113	122



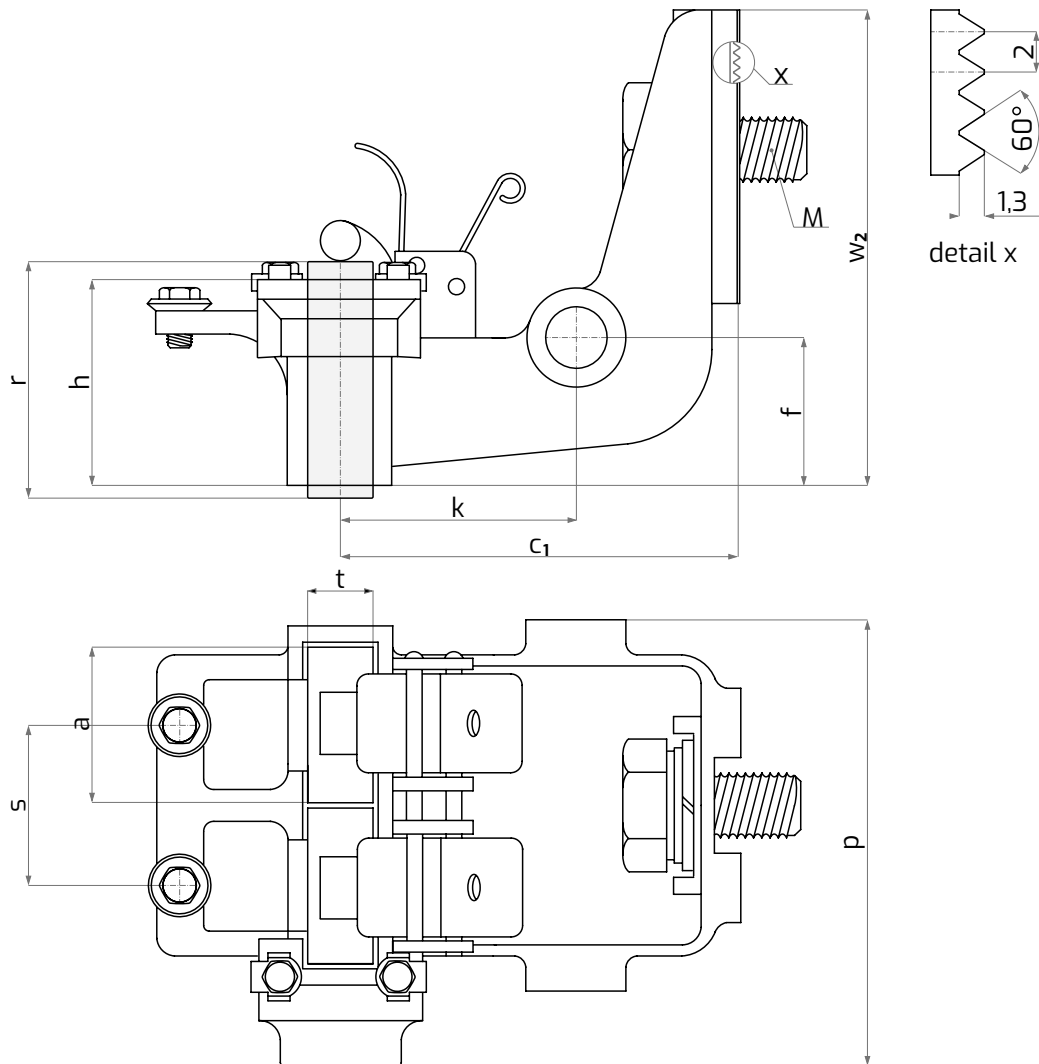
radial **brush-holder for commutator machines**



material : brass

dimensions (mm) :

TYPE	t	a	r	h	c ₁	s	M	k	f	p approx.	w ₂ approx.
501600/IV	20	40	55	48	102	42	M20	60	38	113	122



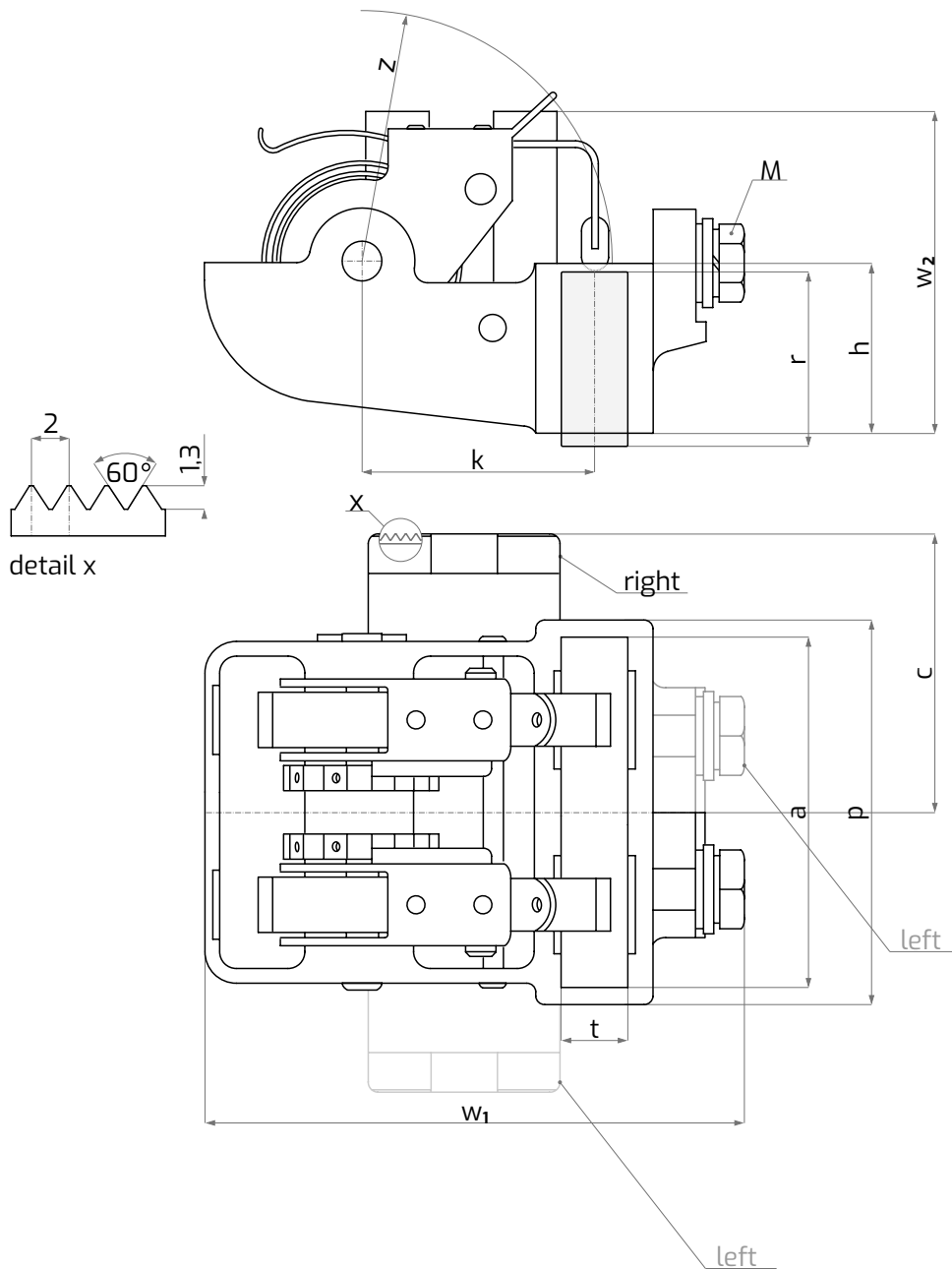
radial **brush-holders for commutator machines**



material : brass

dimensions (mm) :

TYPE	t	a	r	h	c	M	k	z approx.	p approx.	W ₁ approx.	W ₂ approx.
501300 right	12,5	64	45	32	51	M8	44	56	72	102	61
501400 left	12,5	64	45	32	51	M8	44	56	72	102	61



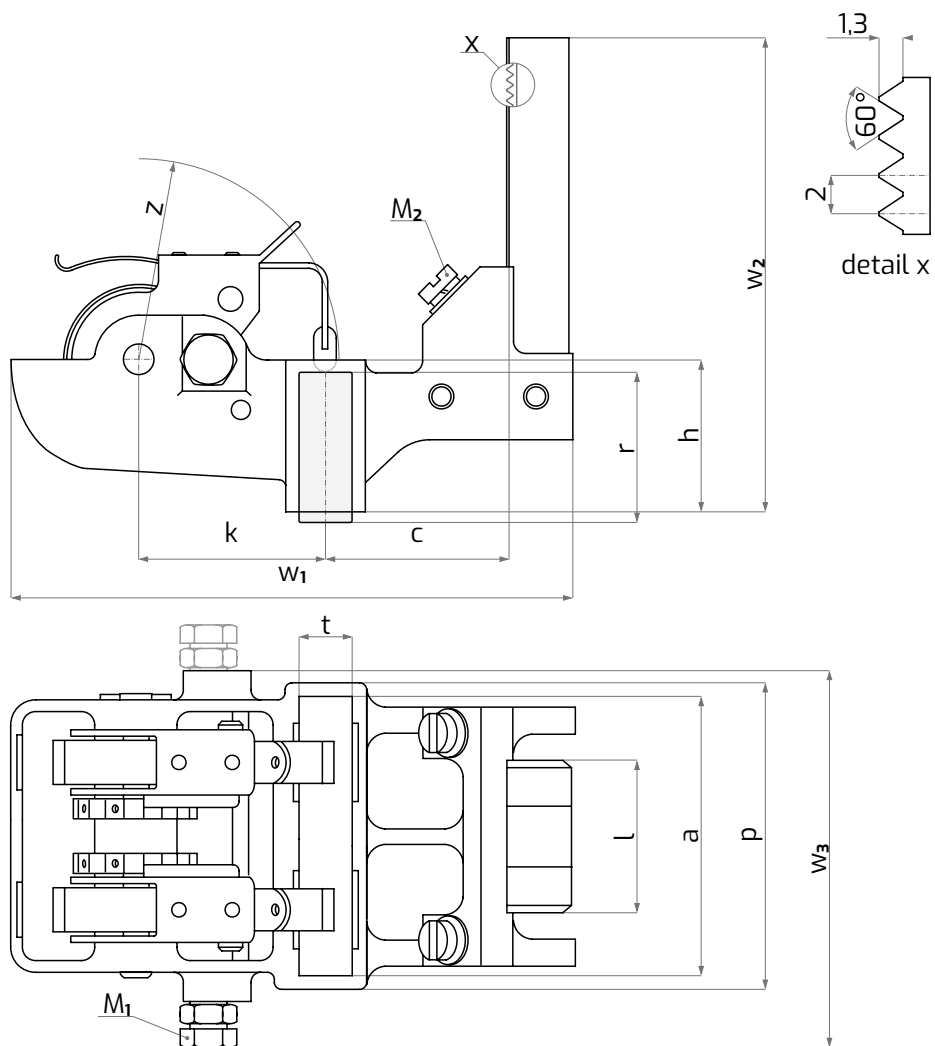
radial **brush-holder for commutator machines**

material : brass

dimensions (mm) :



TYPE	t	a	r	h	l	c	M ₁	M ₂	k	z approx.	p	w ₁	w ₂	w ₃ approx.
501700/M	12.5	64	50	36	36	42	M8	M5	44	56	70	131.5	112	88.5



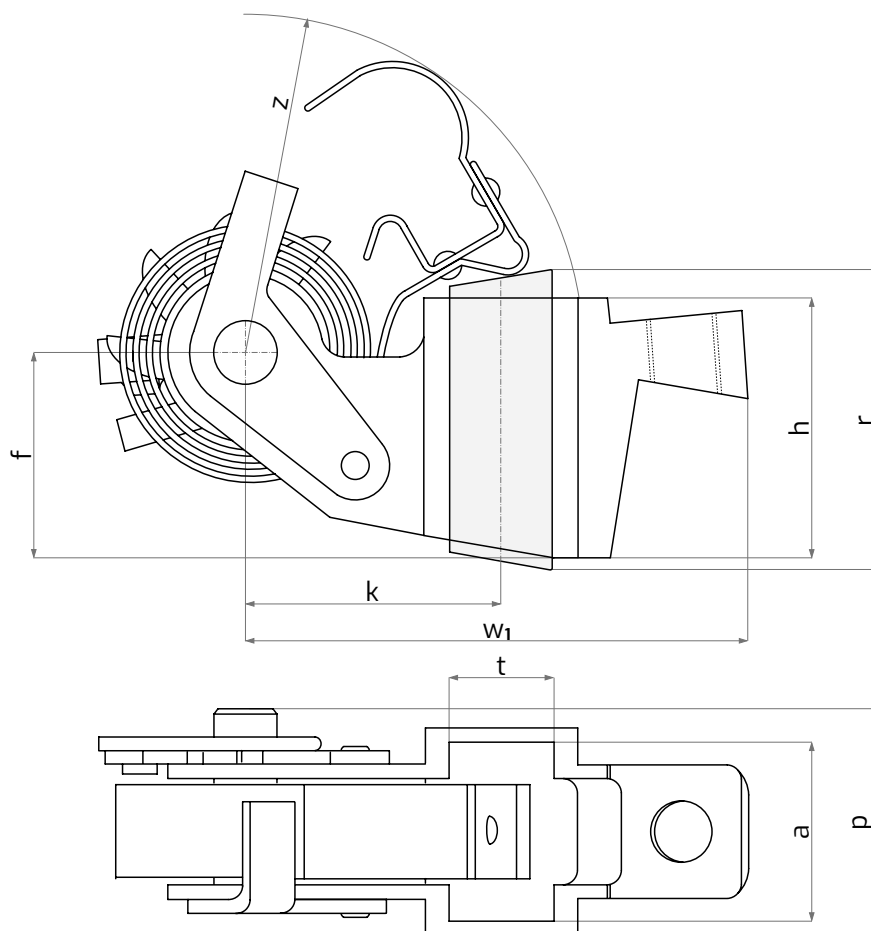
trailing brush-holders for commutator machines



material : brass

dimensions (mm) :

TYPE	t	a	r	h	k	f	z approx.	p approx.	w approx.
500600	12.5	22	40	32	32	25	35	28	63.5
501500	22	32	45	38	36.5	30.5	40	37	72.8



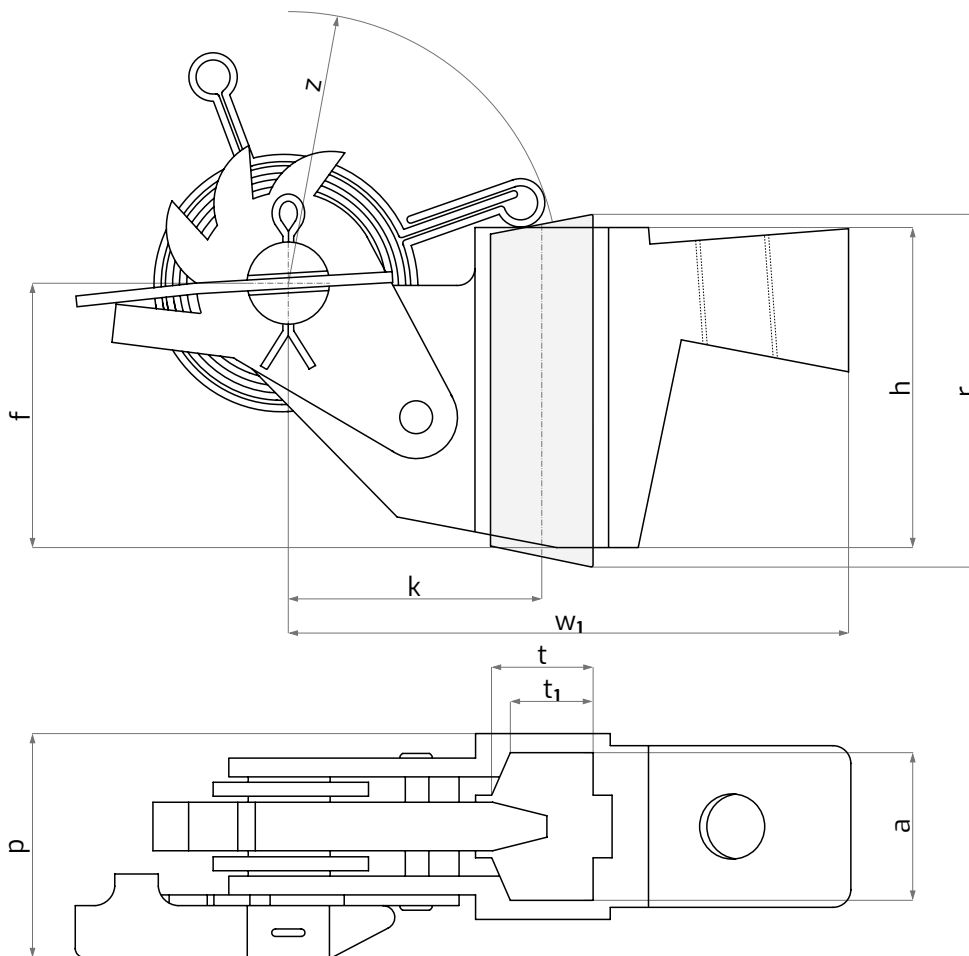
trailing **brush-holder for commutator machines**



material : brass

dimensions (mm) :

TYPE	t	t ₁	a	r	h	k	f	z approx.	p approx.	W ₁ approx.
502100	10	8	16	35	34.3	26	27.6	28	30	58.5



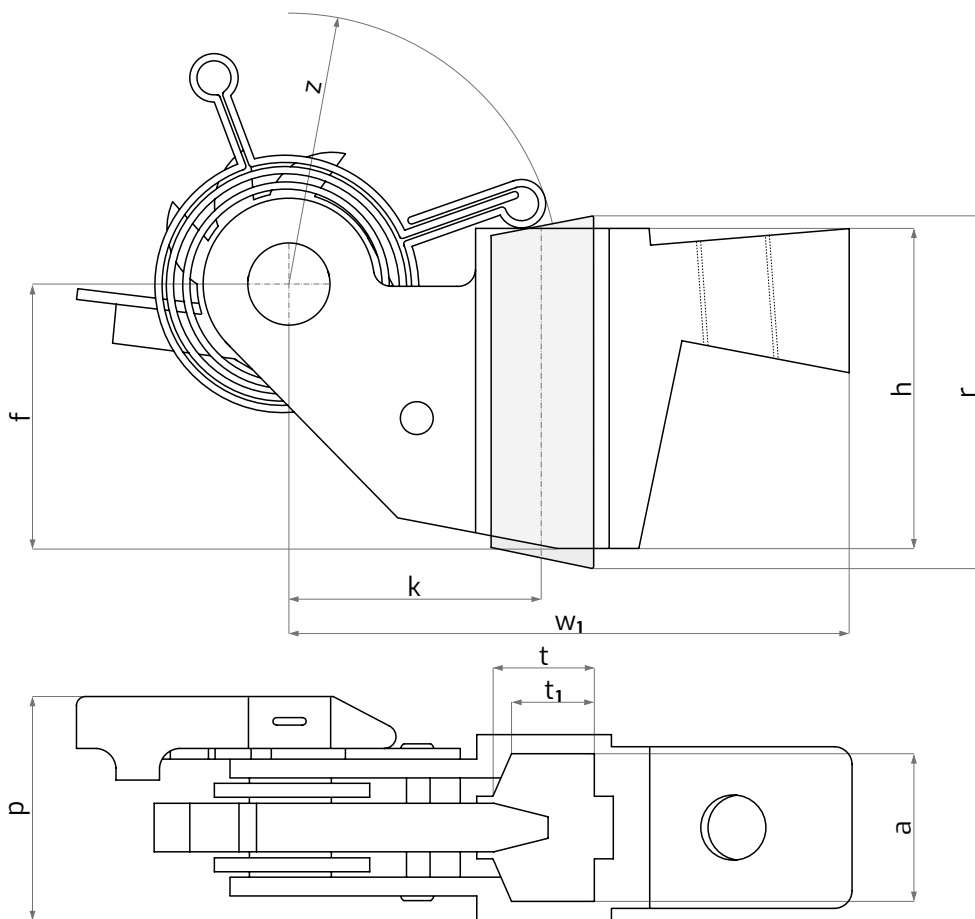
trailing **brush-holder for commutator machines**



material : brass

dimensions (mm) :

TYPE	t	t ₁	a	r	h	k	f	z approx.	p approx.	W ₁ approx.
502200	10	8	16	35	34.5	26	27,6	28	30	58.5



brush-holder clamps for commutator machines

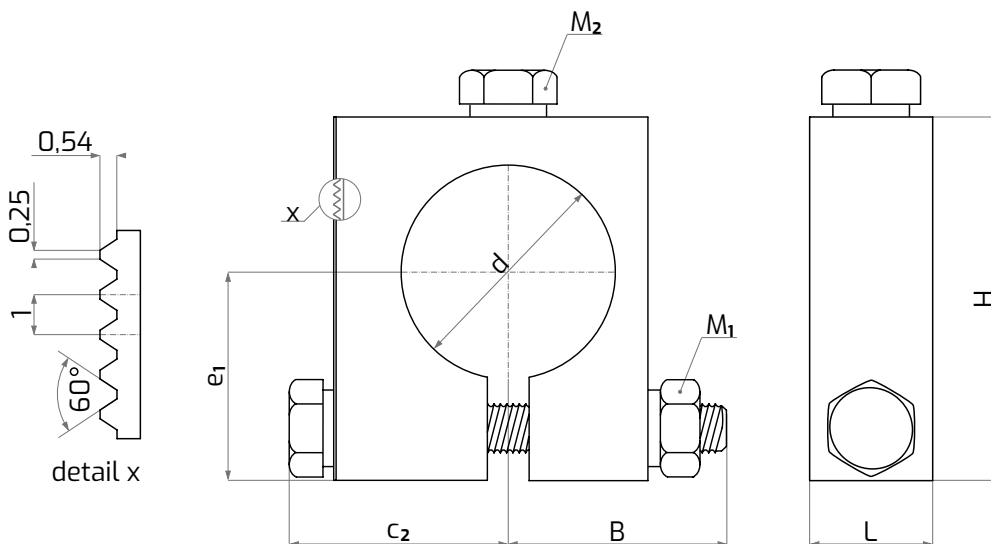


material : brass

dimensions (mm) :

TYPE	d	c ₂	e ₁	L	B	H	M ₁	M ₂
590100*	10	10	16	15	16	30	M6	M5
590200*	10	10	22	15	16	36	M6	M5
590300*	16	13	20	15	20	41	M6	M5
590400*	16	13	24	15	20	45	M6	M5
590500	20	16	24	15	22	47	M6	M5
590600*	20	13,5	26	20	28	51	M8	M6
590700*	25	19	24	15	24	50	M6	M6
590800	25	19	32	20	34	61,5	M8	M8
590900*	32	24	32	20	34	65	M8	M8

* specific arrangements required



intermediate pieces

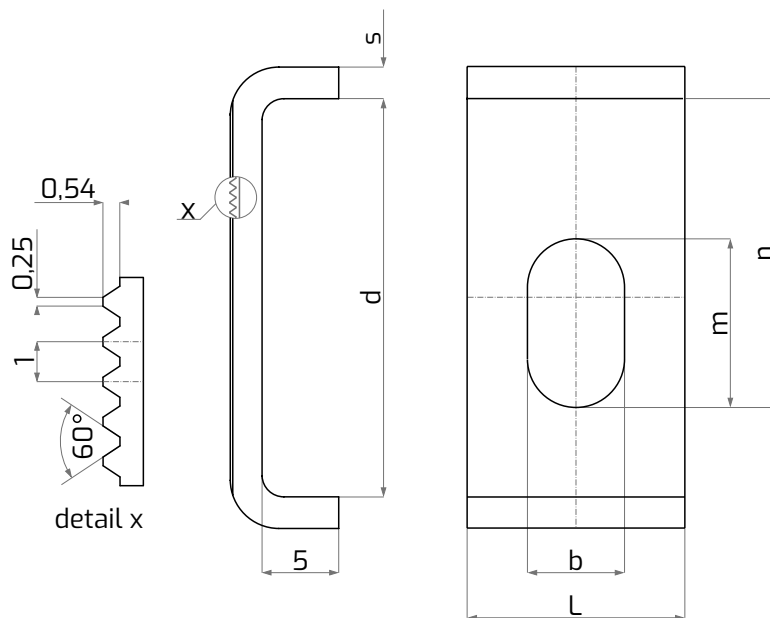


material : brass

dimensions (mm) :

TYP	d	m	n	b	L	s
594100*	16	10	14.5	7	15.5	1.5
594200	20	10	16.5	7	15.5	1.5
594300	25	10	19	7	15.5	1.5
594400	32	13.5	24.5	9.5	21.5	2
594500	25	10	19	8.5	20	2
594600*	21	10	16.5	7	15.5	1.5

* specific arrangements required



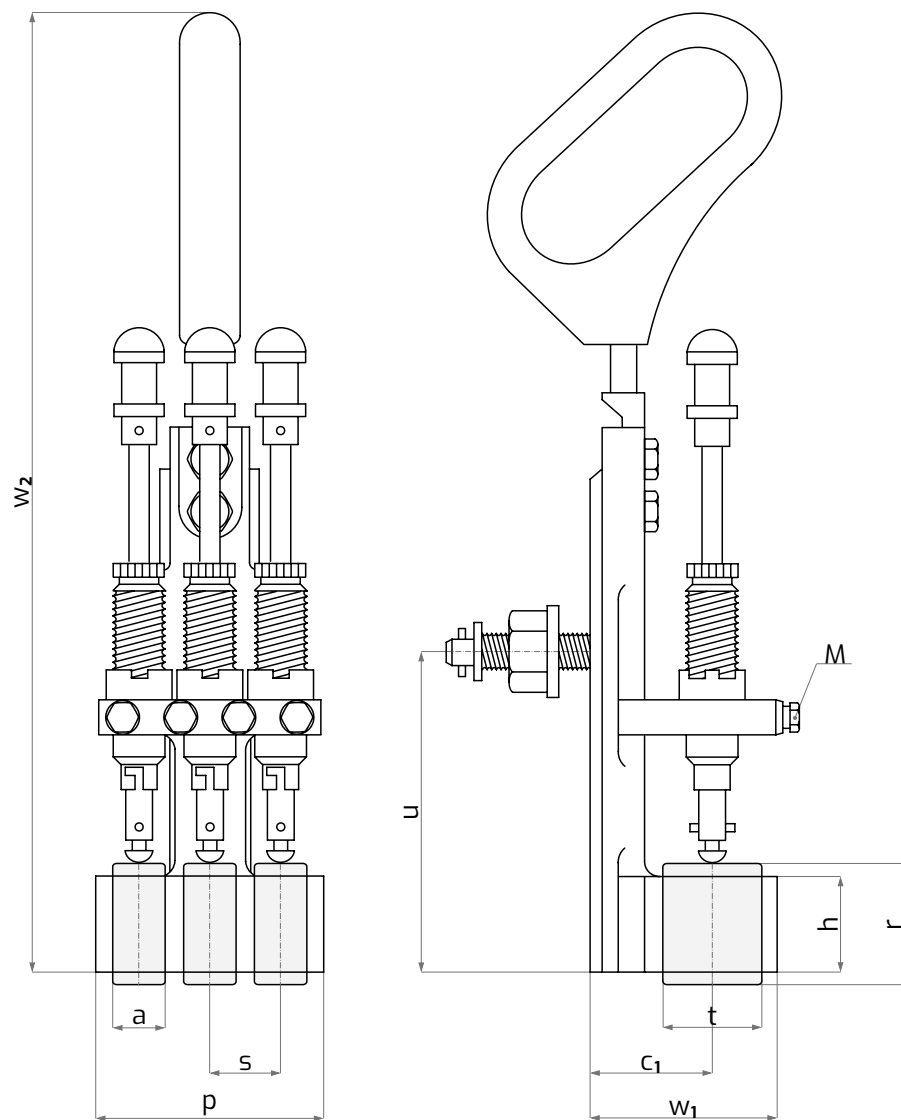
radial brush-holder for slip ring machines



material : brass

dimensions (mm) :

TYPE	t	a	r	h	c ₁	s	M	u	W ₁ approx.	W ₂ approx.
503100	32	16	40	32	39	22	M6	105	68	331



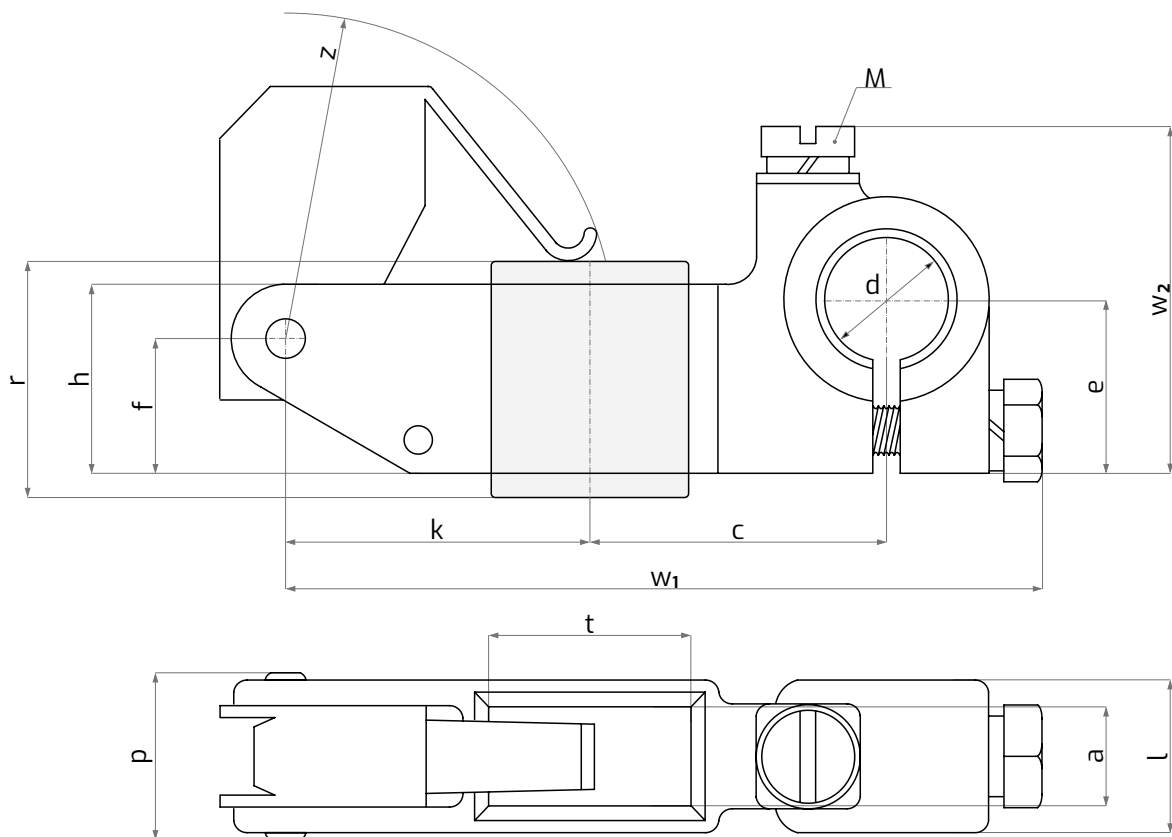
radial brush-holder for slip ring machines



material : brass

dimensions (mm) :

TYPE	t	a	r	h	c	e	d	l	M	k	f	z approx.	p approx.	w ₁ approx.	w ₂ approx.
505300	16	8	20	15	23	14	10	12	M4	23.7	11	29	13	58	27,5



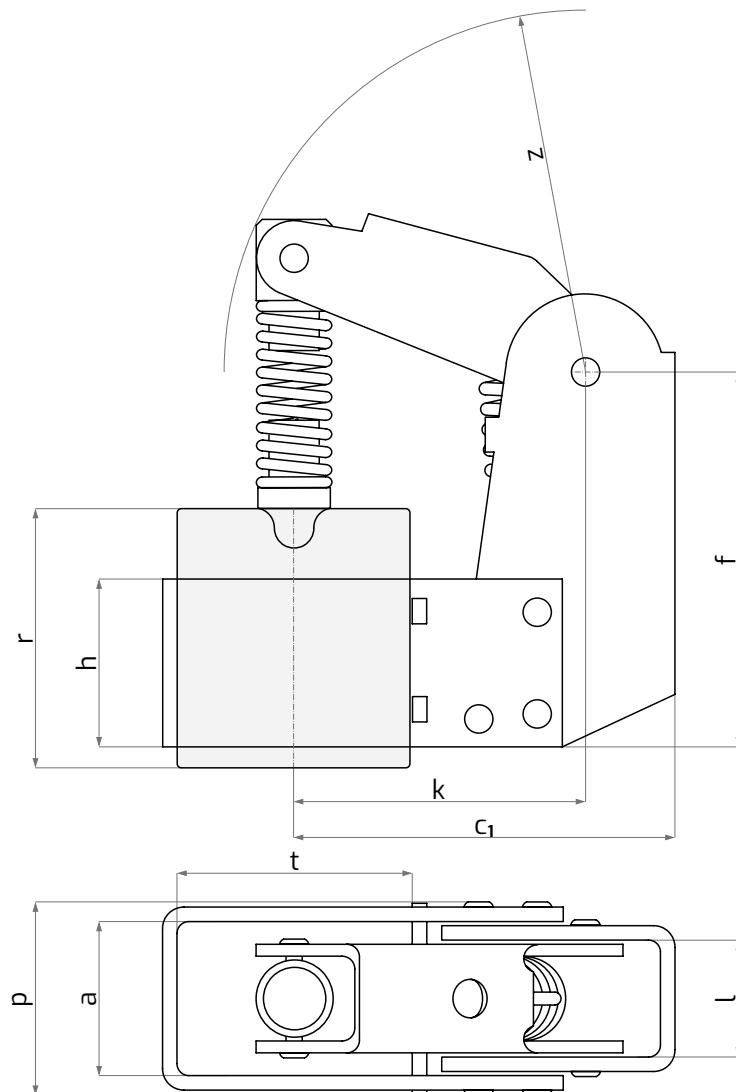
radial brush-holder for slip ring machines

material : brass

dimensions (mm) :



TYPE	t	a	r	h	c	l	k	f	z approx.	p approx.
537600	40	20	32	25	52.5	16	40	49	48	28



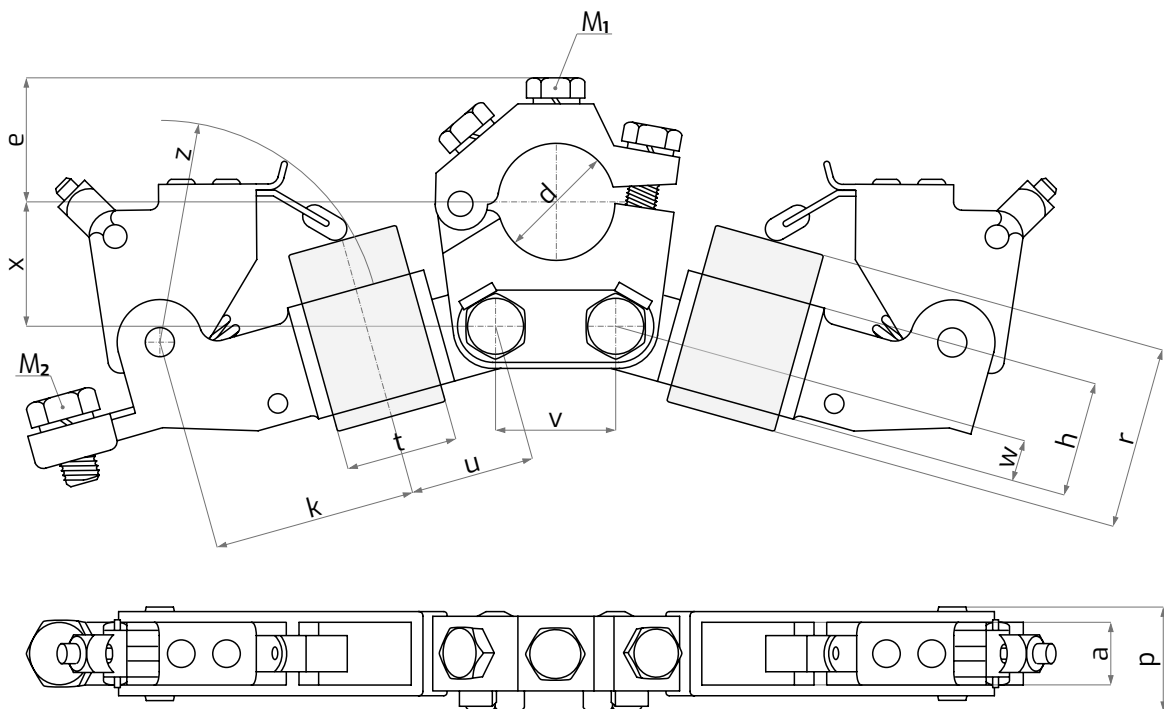
double clamping brush-holders for slip ring machines



material : brass

dimensions (mm) :

TYPE	t	a	r	h	e	d	M ₁	M ₂	k	u	v	x	z approx.	p approx.	w
508500	12.5	8	25	16	19	16	M5	M6	26.25	15	17	17	35	13.5	6
508600	16	8	25	16	19	16	M5	M6	28	17	17	17	35	13.5	6
508800	20	10	32	20	19	16	M5	M6	32	19	17	17	35	14.5	7
508200	25	10	32	20	19	16	M5	M6	34.5	21.5	17	17	37	14.5	7
509100	25	12.5	32	20	24	20	M6	M8	38	26	17	19.5	40	19.5	8.5
509600	32	12.5	32	20	24	20	M6	M8	41.5	29.5	17	19.5	41	19.5	8.5
509300	32	16	40	25	29	25	M8	M10	51	32	23	24.5	56	22	12.5
509700	32	20	40	25	29	25	M8	M10	49	32	23	24.5	55	27	12.5
509500	40	20	50	32	29	25	M8	M10	55	37.5	23	24.5	61	27	12.5



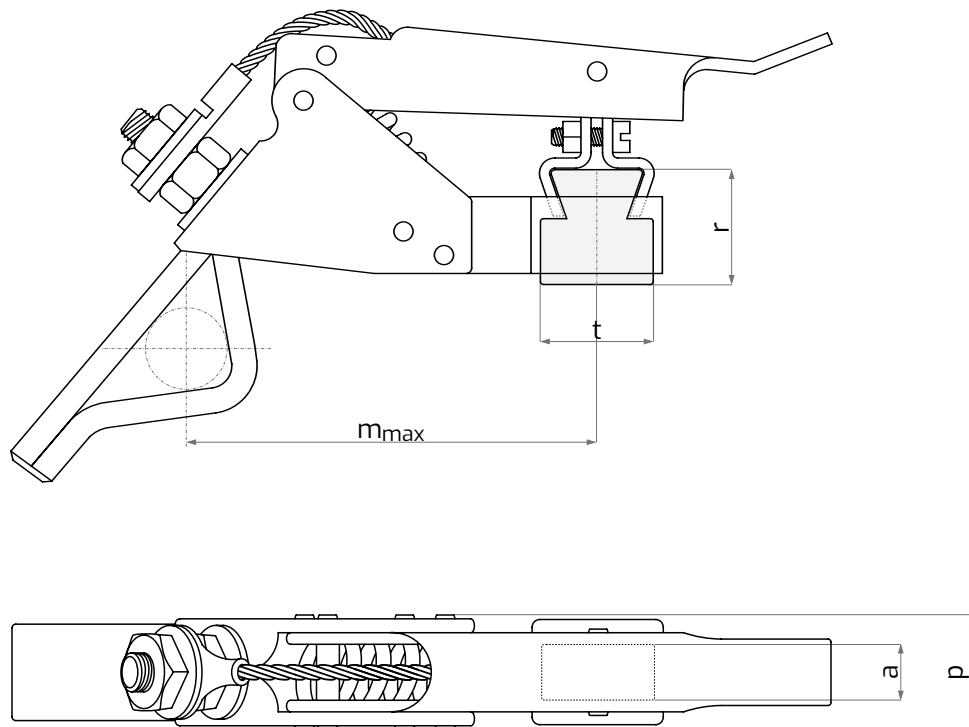
single leg brush-holder for slip ring machines



material : brass

dimensions (mm) :

TYPE	t	a	r	m _{max}	p approx.
536600	20	15	22	61.3	25



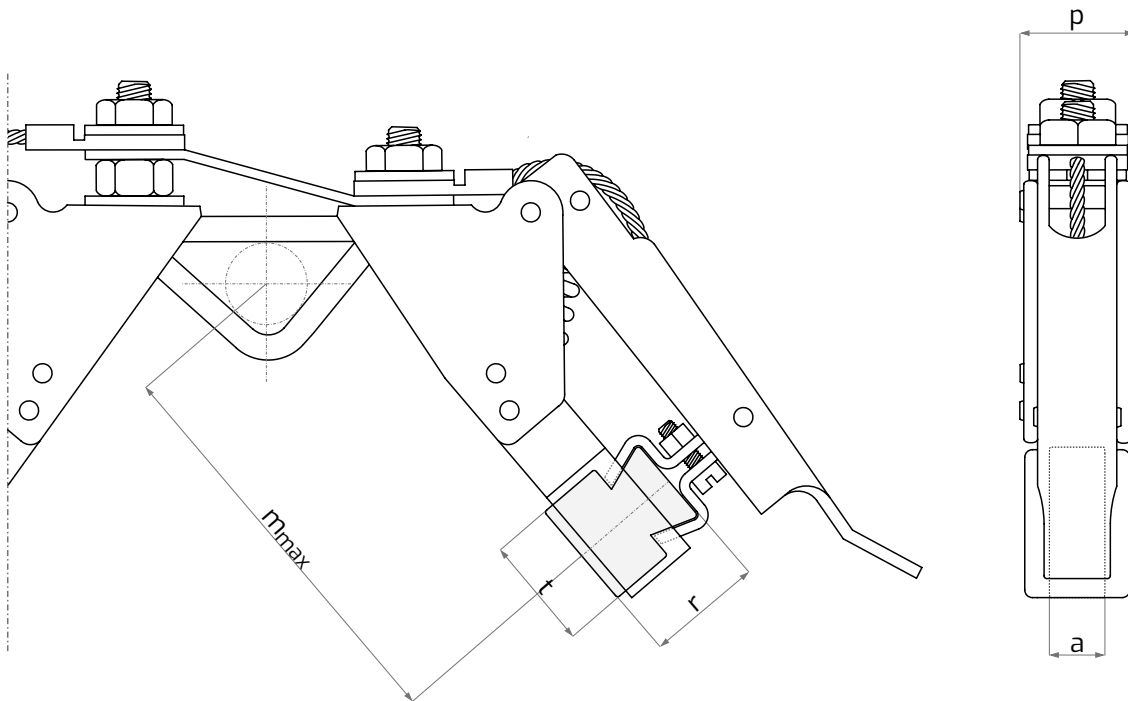
double leg brush-holder for slip ring machines

material : brass

dimensions (mm) :



TYPE	t	a	r	m _{max}	p _{approx.}
536700	20	15	22	61.3	25



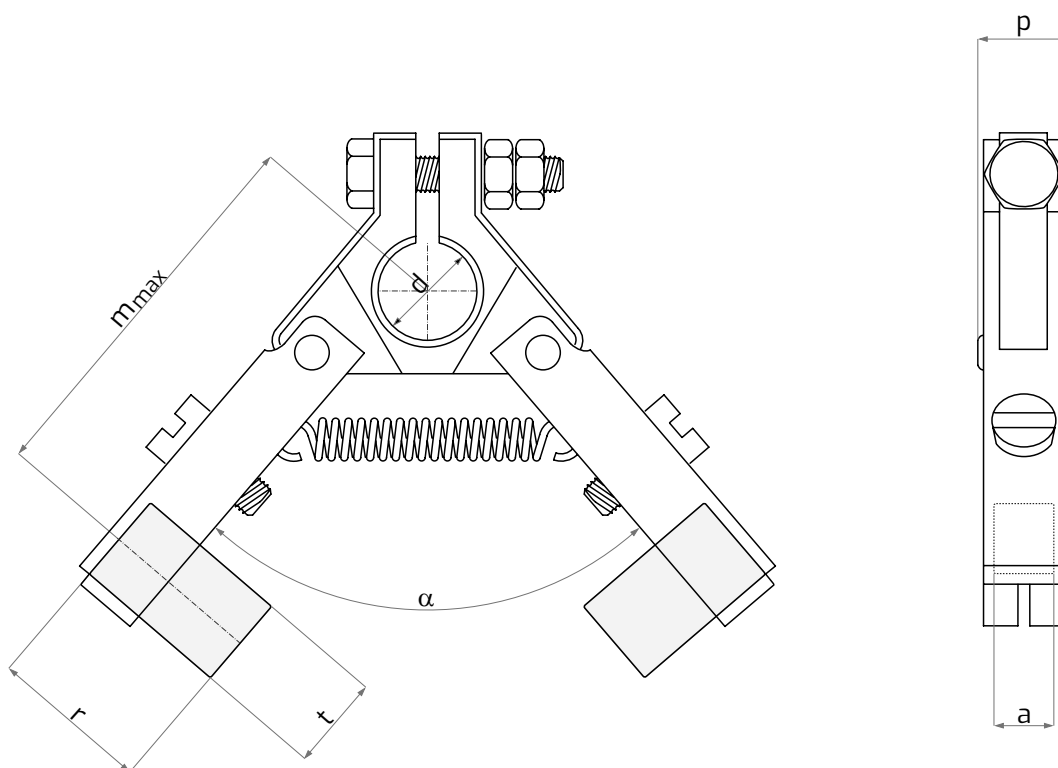
double leg brush-holder for slip ring machines

material : brass

dimensions (mm) :



TYPE	t	a	r	m _{max}	α	d	p _{approx.}
536100	8	5	12	30	60°	8	9.5



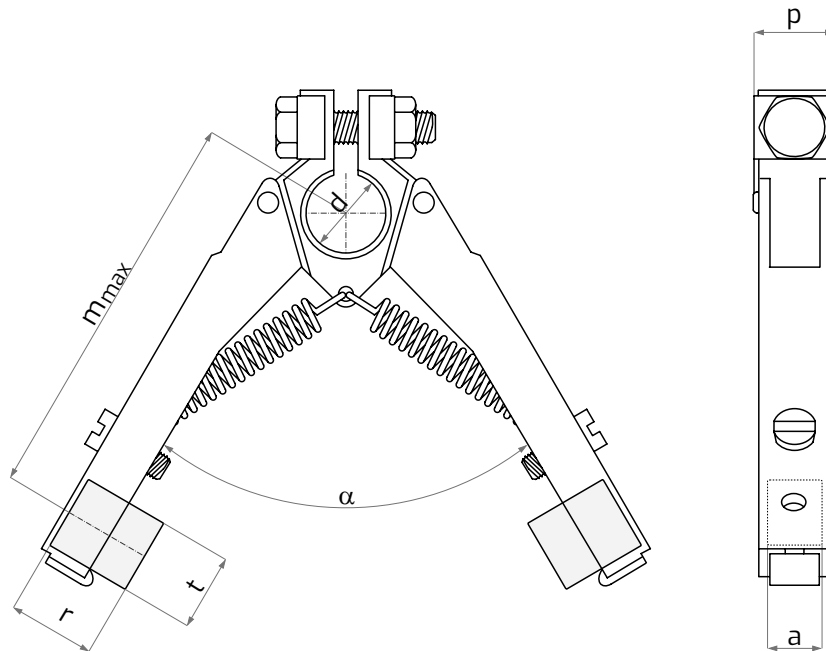
double leg brush-holder for slip ring machines

material : brass

dimensions (mm) :



TYPE	t	a	r	m _{max}	α	d	p _{approx.}
536800	25	10	25	83	66°	16	16



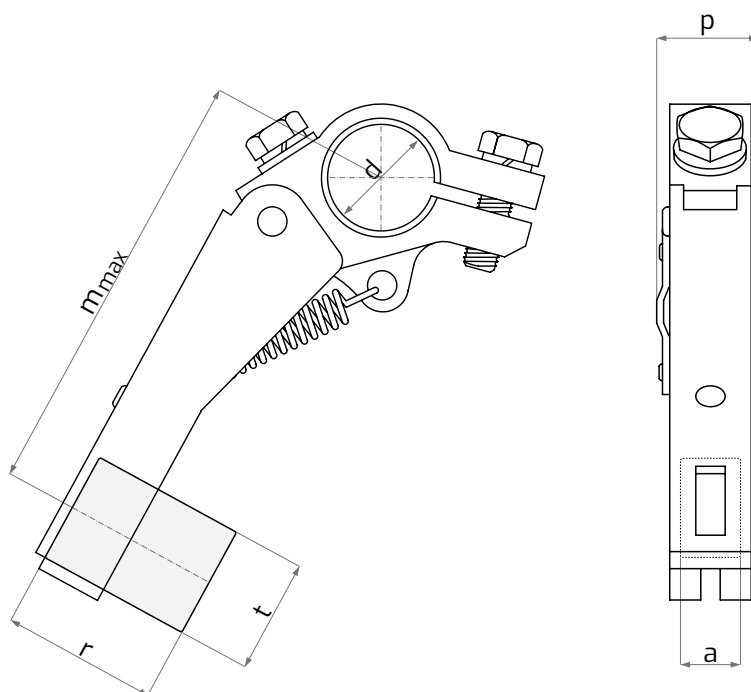
single leg brush-holder for slip ring machines

material : brass

dimensions (mm) :



TYPE	t	a	r	m _{max}	d	p _{approx.}
536400	20	10	25	69	15	16



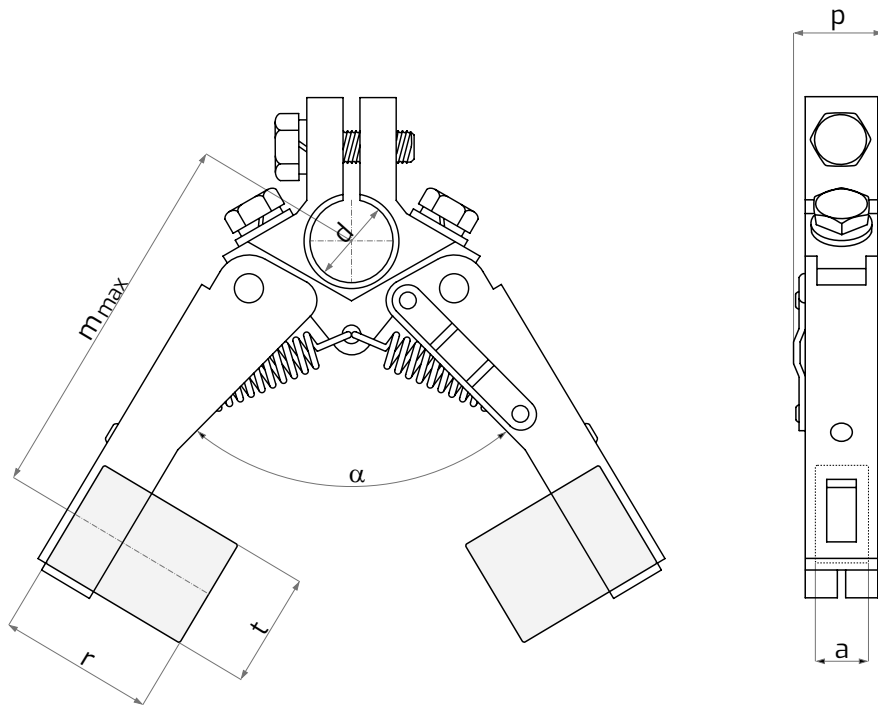
double leg brush-holder for slip ring machines

material : brass

dimensions (mm) :



TYPE	t	a	r	m _{max}	α	d	p _{approx.}
536500	20	10	25	69	60°	15	16



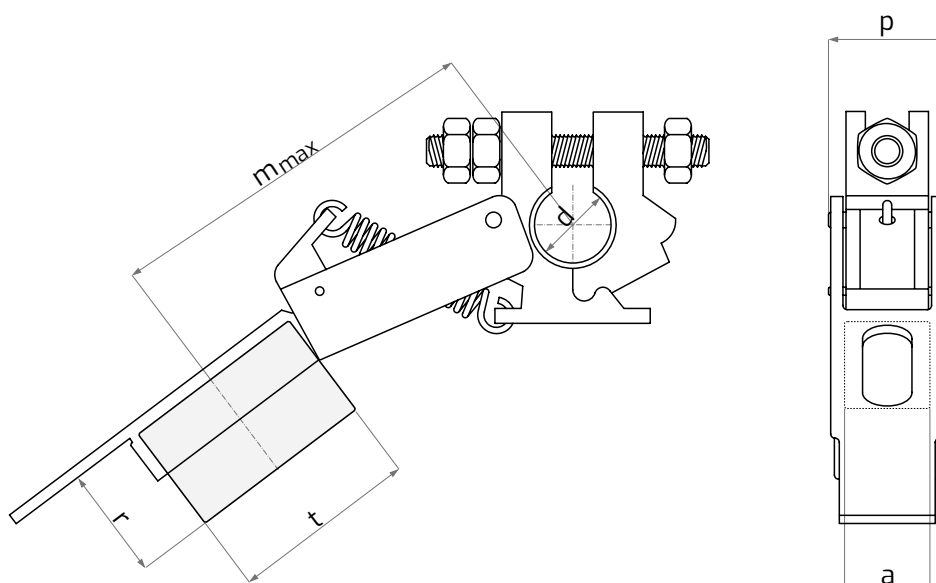
single leg brush-holders for slip ring machines



material : brass

dimensions (mm) :

TYPE	t	a	r	m _{max}	d	p approx.
536900	32	16	25	76	17,2	23
537400	40	20	32	80	17,2	23



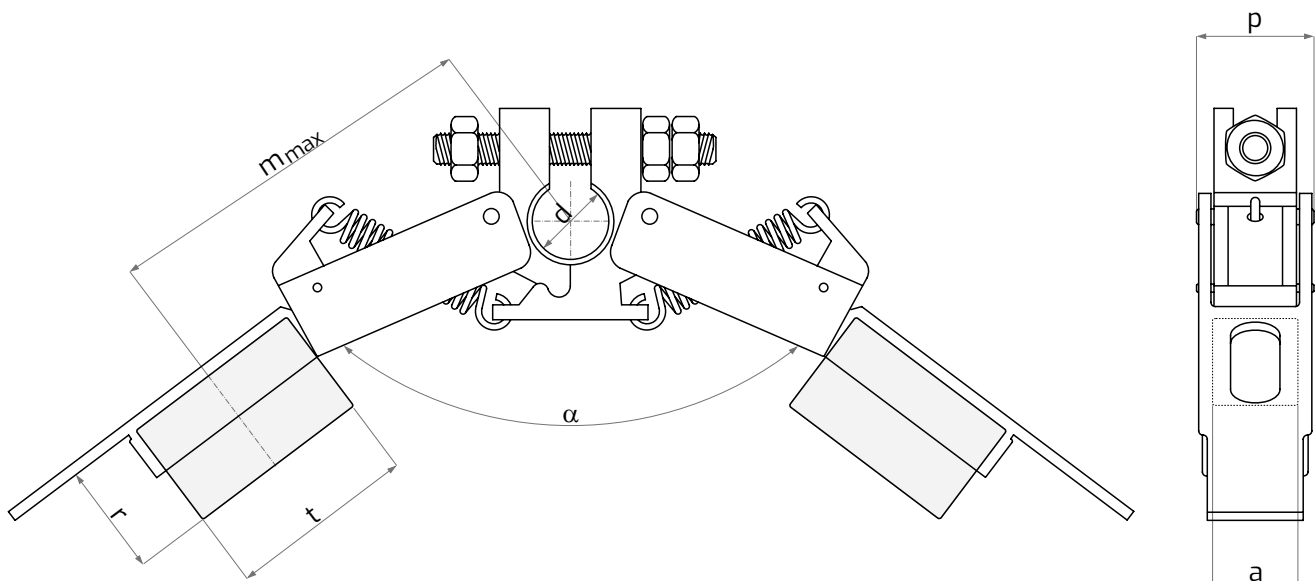
double leg brush-holder for slip ring machines



material : brass

dimensions (mm) :

TYPE	t	a	r	m _{max}	α	d	p _{approx.}
537000	32	16	25	76	60°	17.2	23
537500	40	20	32	80	60°	17.2	23



double leg brush-holder for slip ring machines

material : brass

dimensions (mm) :



TYPE	t	a	r	m _{max}	α	d	p _{approx.}
536300	20	8	30	74	60°	15.5	15.5

